

- The next set of slides (Figures 16a-q) depict in greater detail the flooding experienced within St. Bernard Polder during Hurricane Katrina.
- These images show Hurricane Katrina's storm surge as it penetrates and inundates St. Bernard Polder during the course of the storm. Water surface elevations are shown in color, with wind speed vectors represented by arrows.
- Between 2:00 am and 4:00 am CDT on August 29, 2005, Hurricane Katrina's storm surge grew from 6 ft to over 10 ft in Lake Borgne and the MRGO Reach 1 and Reach 2 channels.
- By 6:00 am CDT, floodwater is pouring into the Lower Ninth Ward of New Orleans through the North breach in the IHNC floodwall.
- By 8:00 am CDT, floodwaters pouring through both IHNC floodwall breaches have inundated almost the entire Lower Ninth Ward, with water surface elevations as high as 8 or 9 ft near the breaches.
- By this time, water accumulating in the Central Wetlands from the MRGO Reach 2 breaches begins to overtop the 40 Arpent levee.

8/29/2005 at 2 am CDT

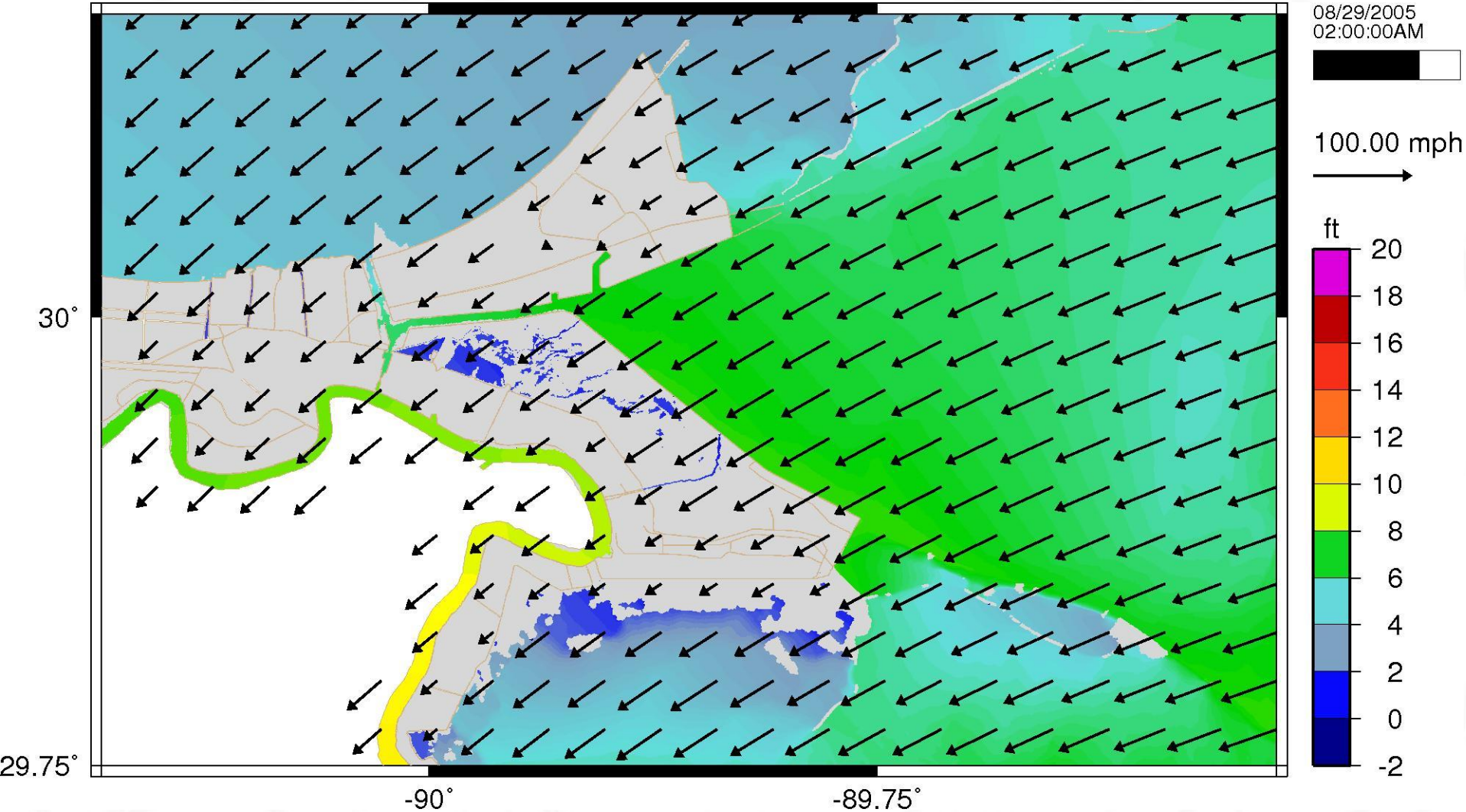


Figure 16a

8/29/2005 at 4 am CDT

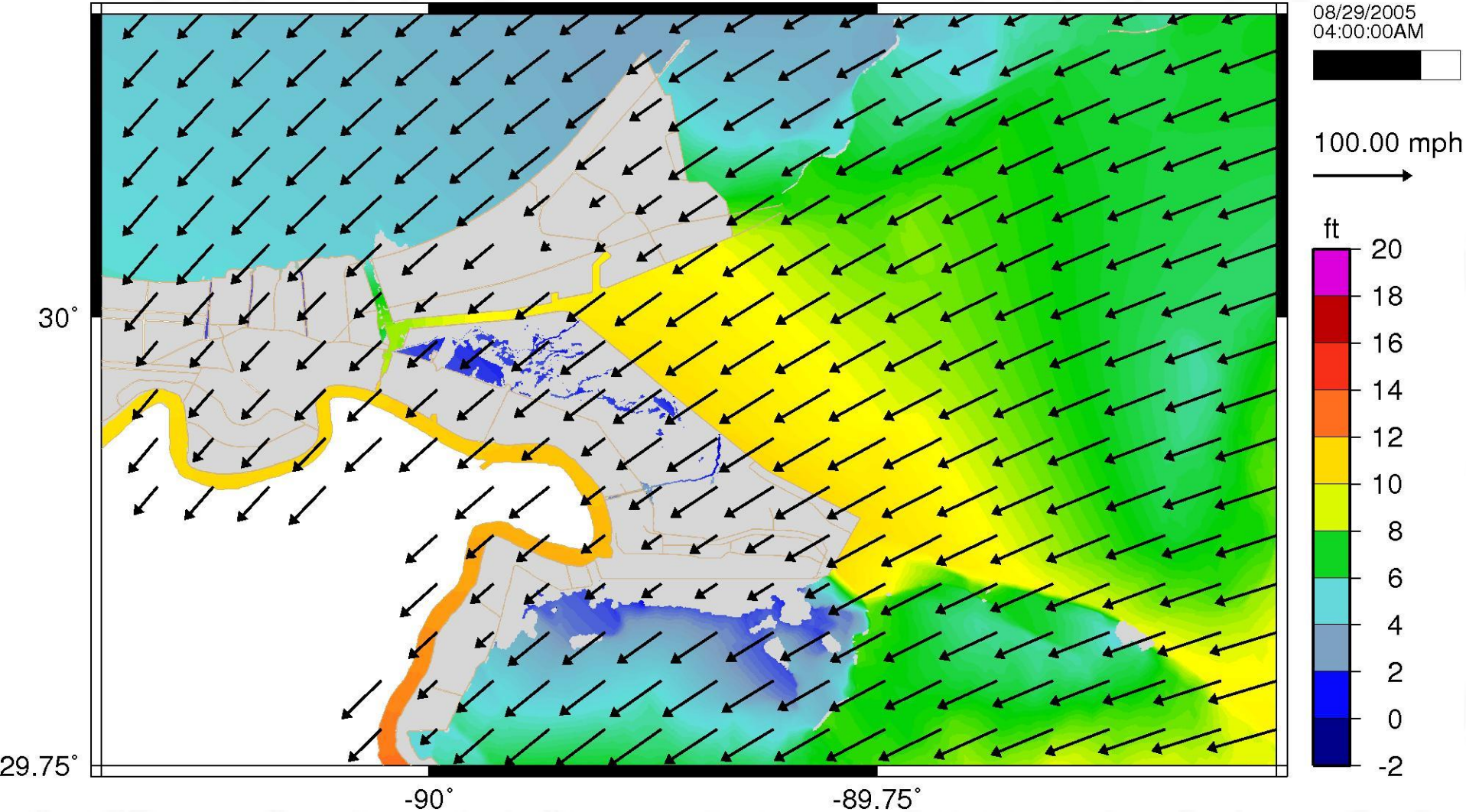


Figure 16b

8/29/2005 at 6 am CDT

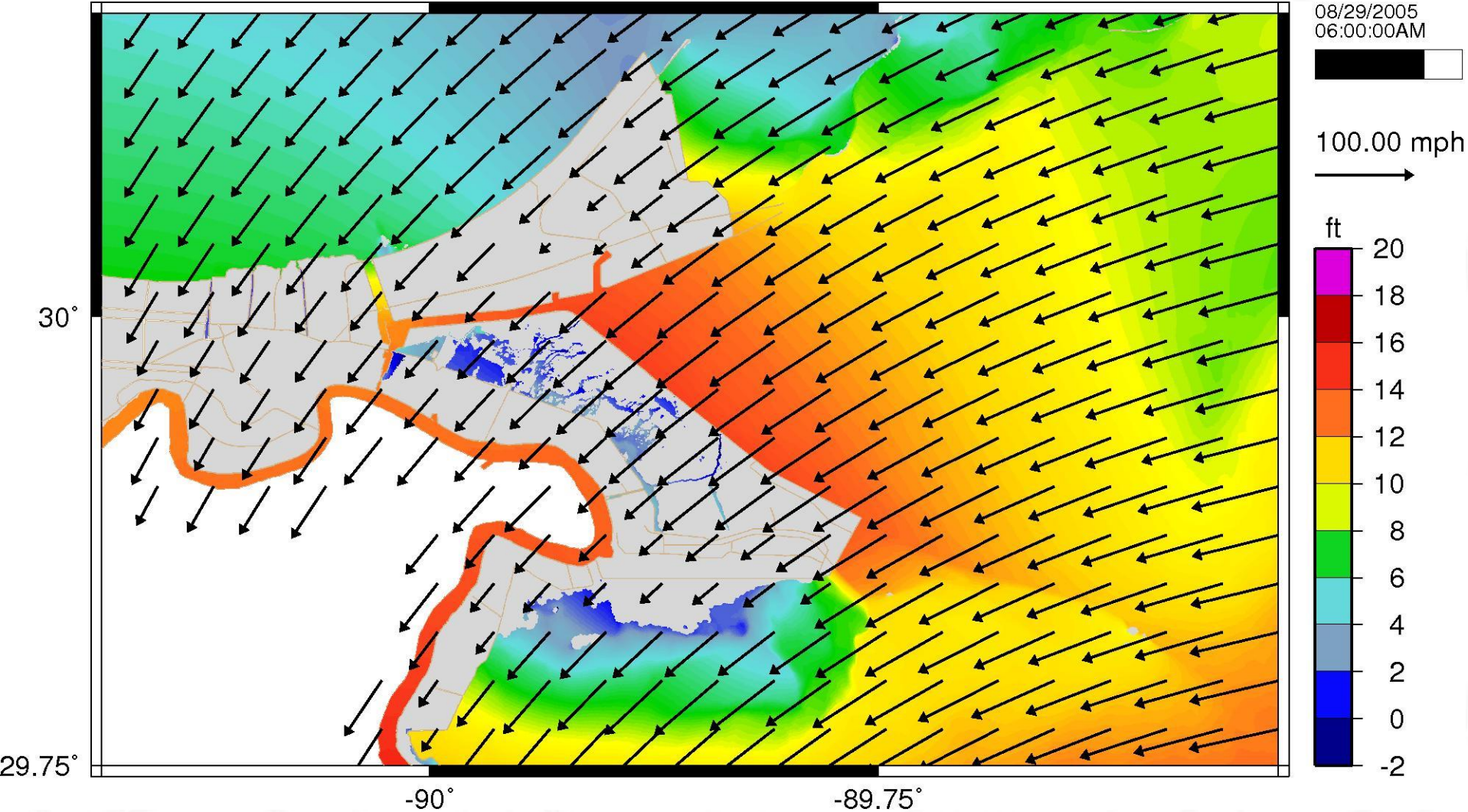


Figure 16c

8/29/2005 at 7 am CDT

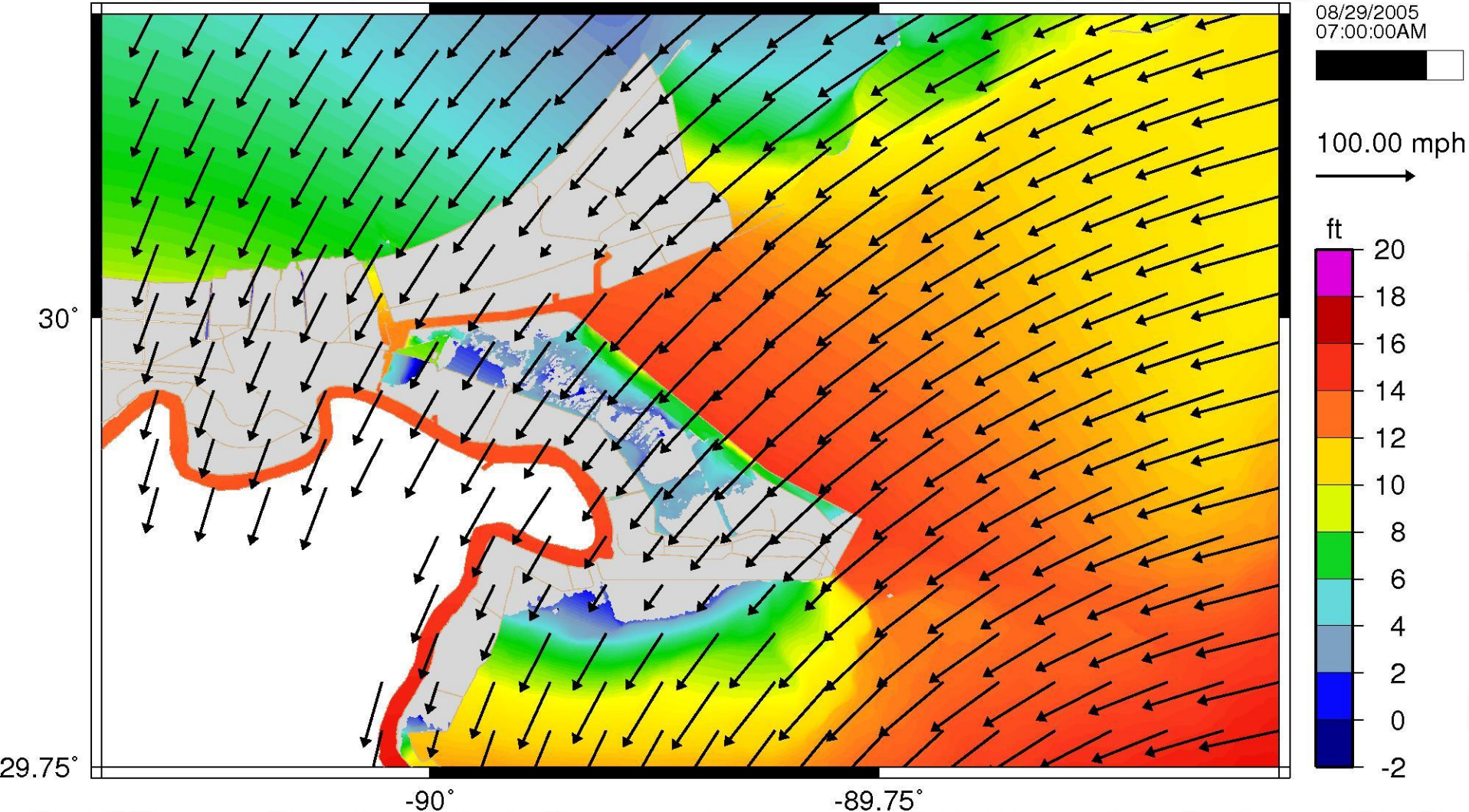


Figure 16d

8/29/2005 at 8 am CDT

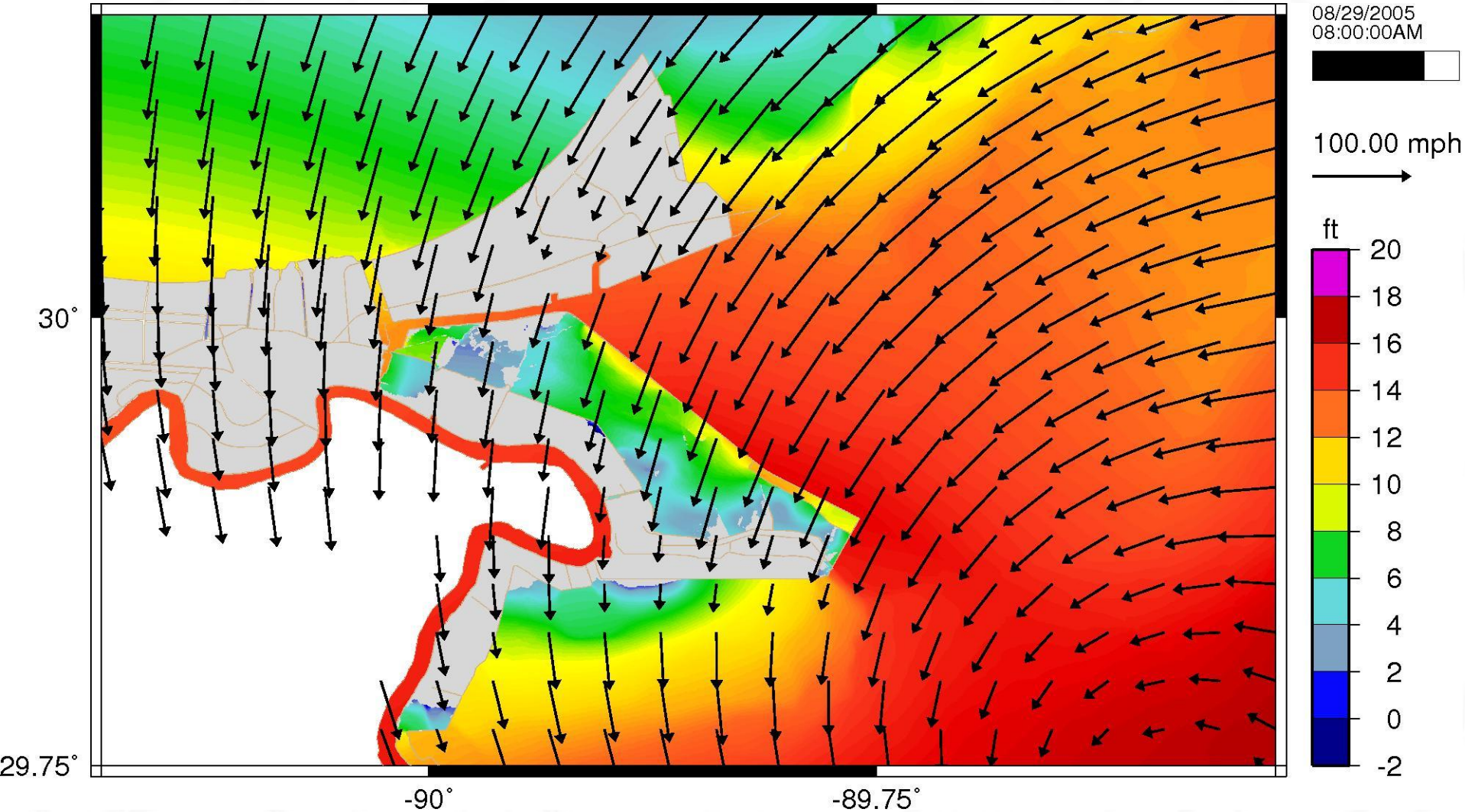


Figure 16e

- As shown in the next series of slides (Figures 16f-q) floodwaters continue to pour into St. Bernard Polder from the IHNC breaches, inundating the entire Lower Ninth Ward and the portion of St. Bernard west of Paris Road.
- Simultaneously, floodwaters moving through the Reach 2 levee breaches over the Central Wetlands begin overtopping the 40 Arpent Levee along its entire length, inundating much of St. Bernard Parish east of Paris Road.
- By 12:00 noon CDT on August 29, 2005, floodwaters from both the IHNC breaches and the Reach 2 levee breaches have substantially inundated the portion of the Polder within the federal levee system.
- Water surface elevations continue to rise throughout the afternoon, with peak water surface elevations reaching 10-12 ft throughout the Polder and at each Trial Property location within the federal levee system.

8/29/2005 at 9 am CDT

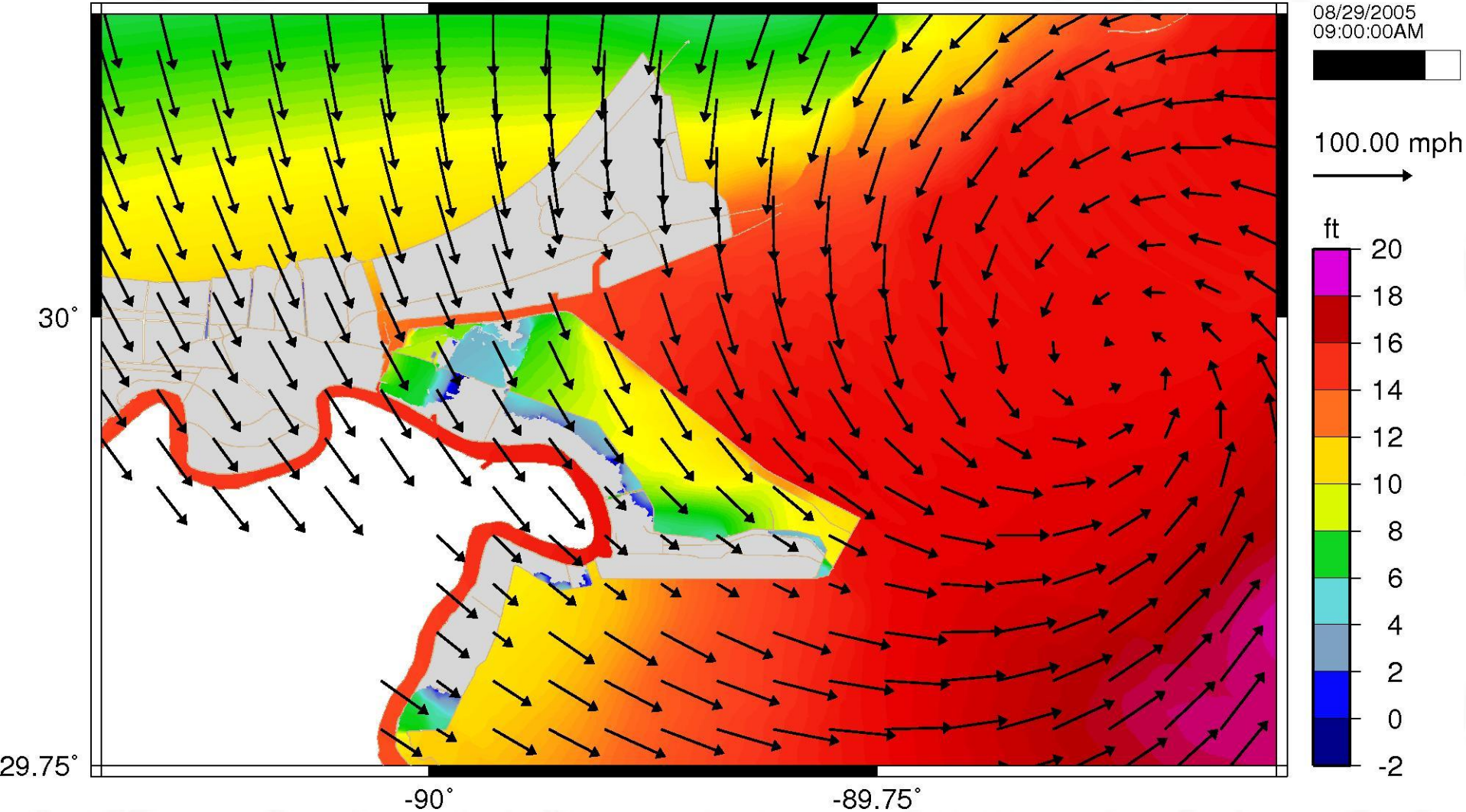


Figure 16f

8/29/2005 at 10 am CDT

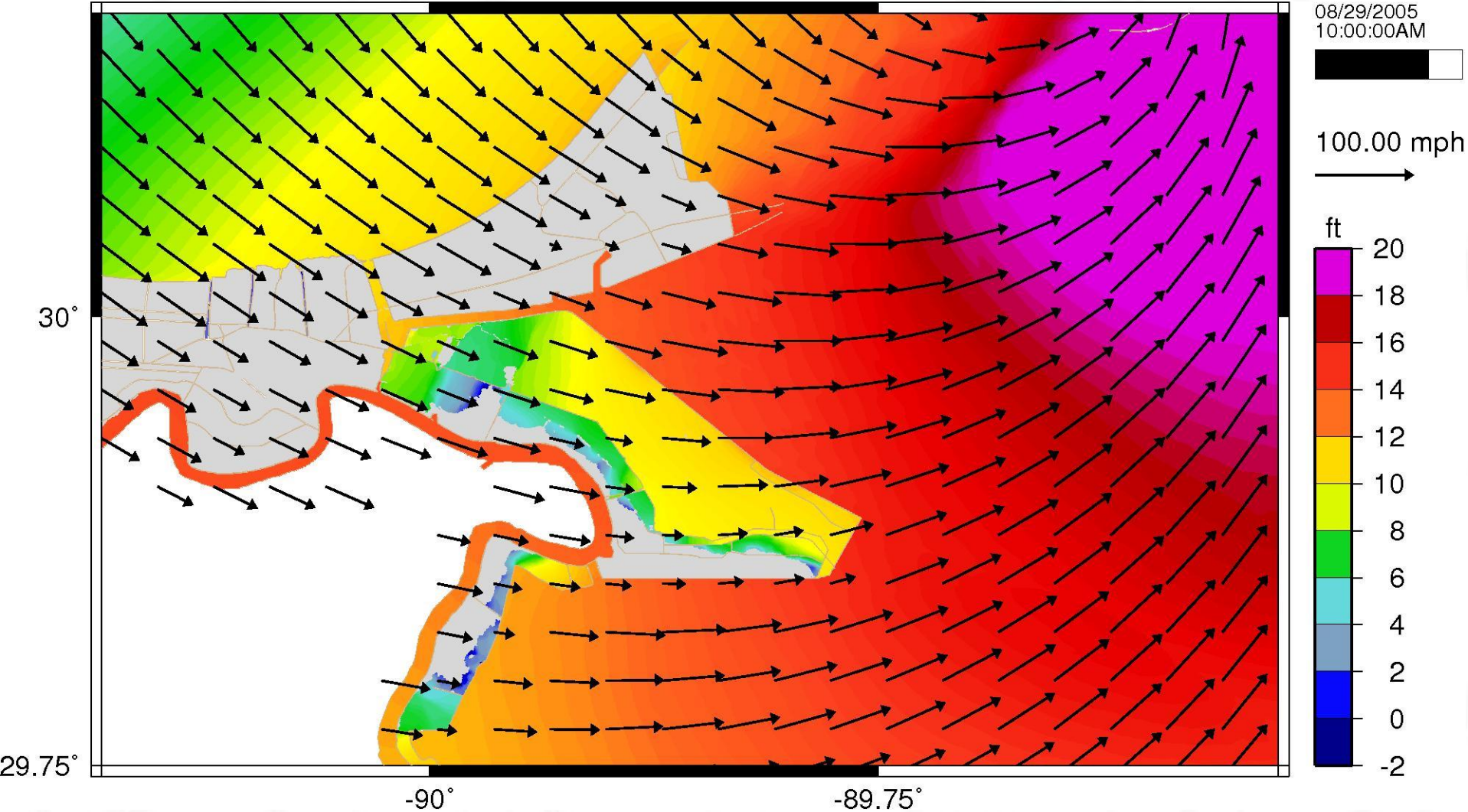


Figure 16g

8/29/2005 at 11 am CDT

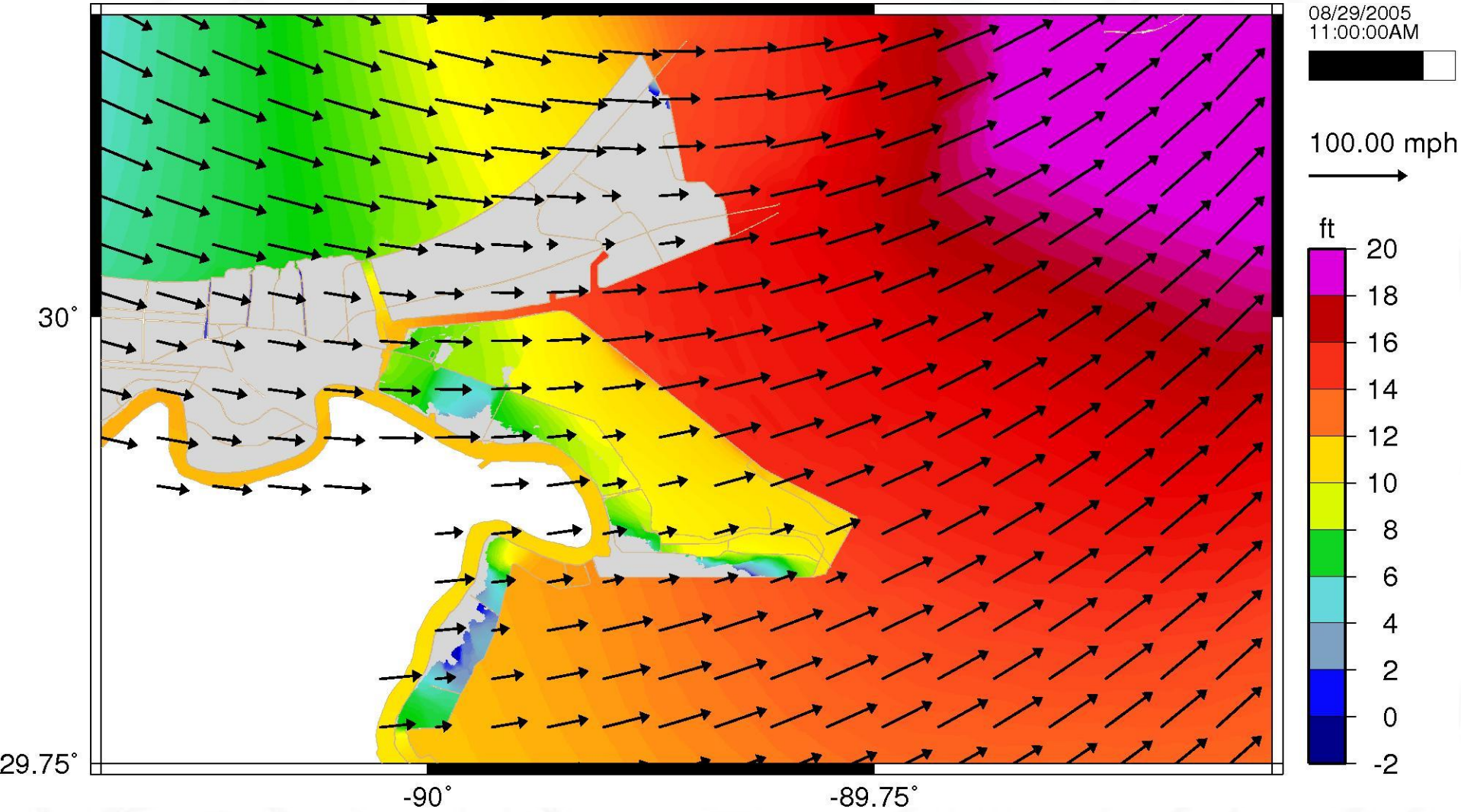


Figure 16h

8/29/2005 at 12 pm CDT

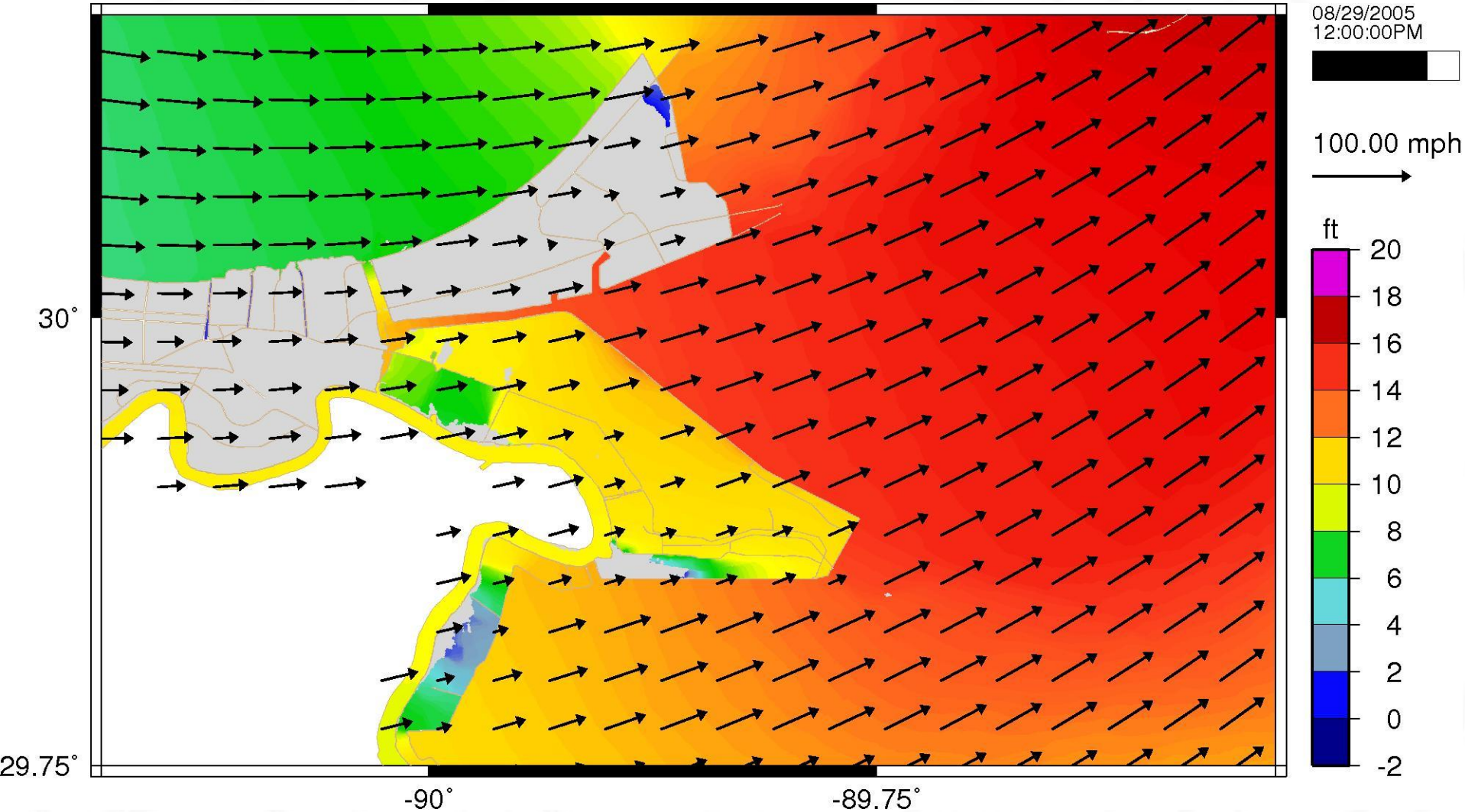


Figure 16i

8/29/2005 at 1 pm CDT

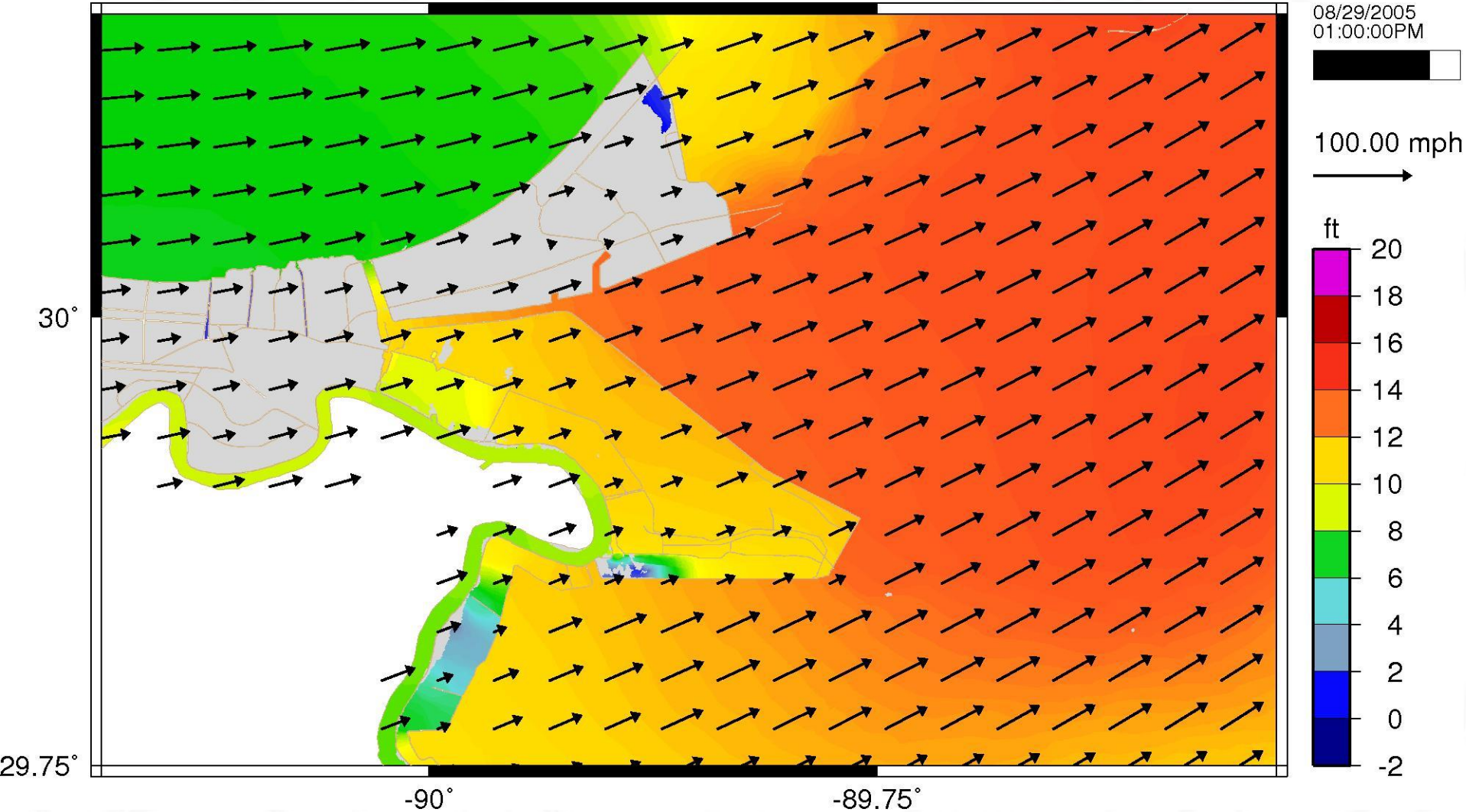


Figure 16j

8/29/2005 at 2 pm CDT

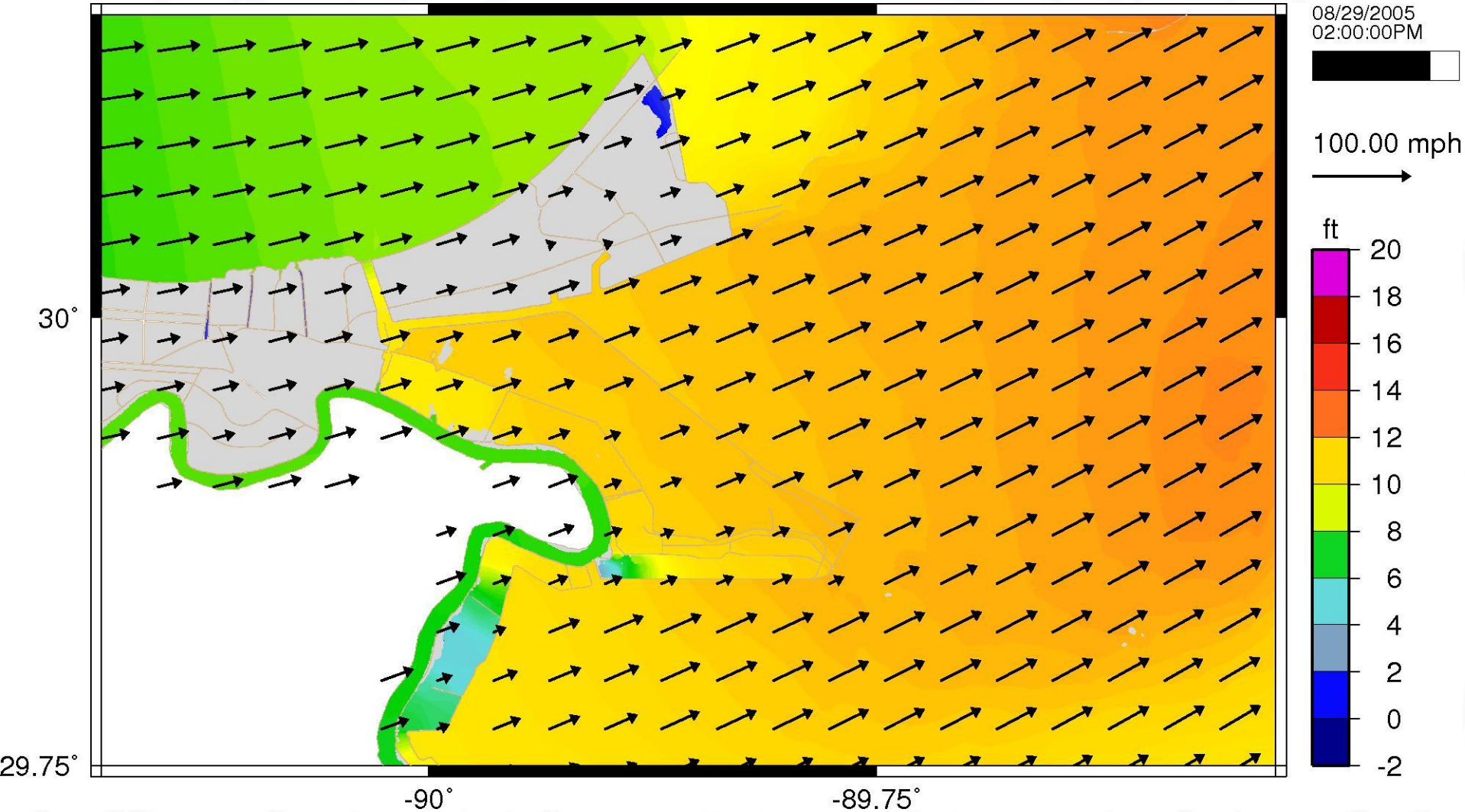


Figure 16k

8/29/2005 at 3 pm CDT

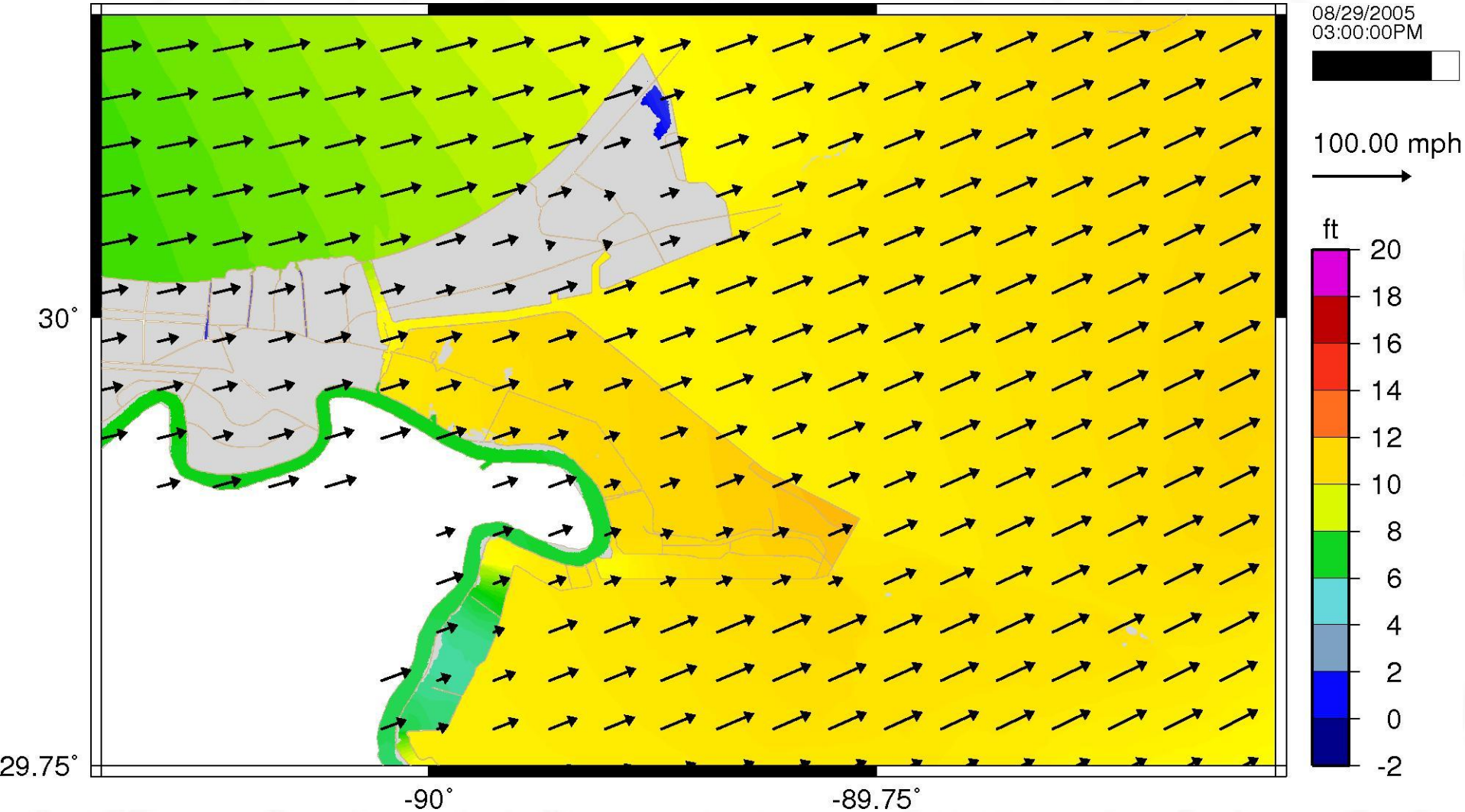


Figure 16l

8/29/2005 at 4 pm CDT

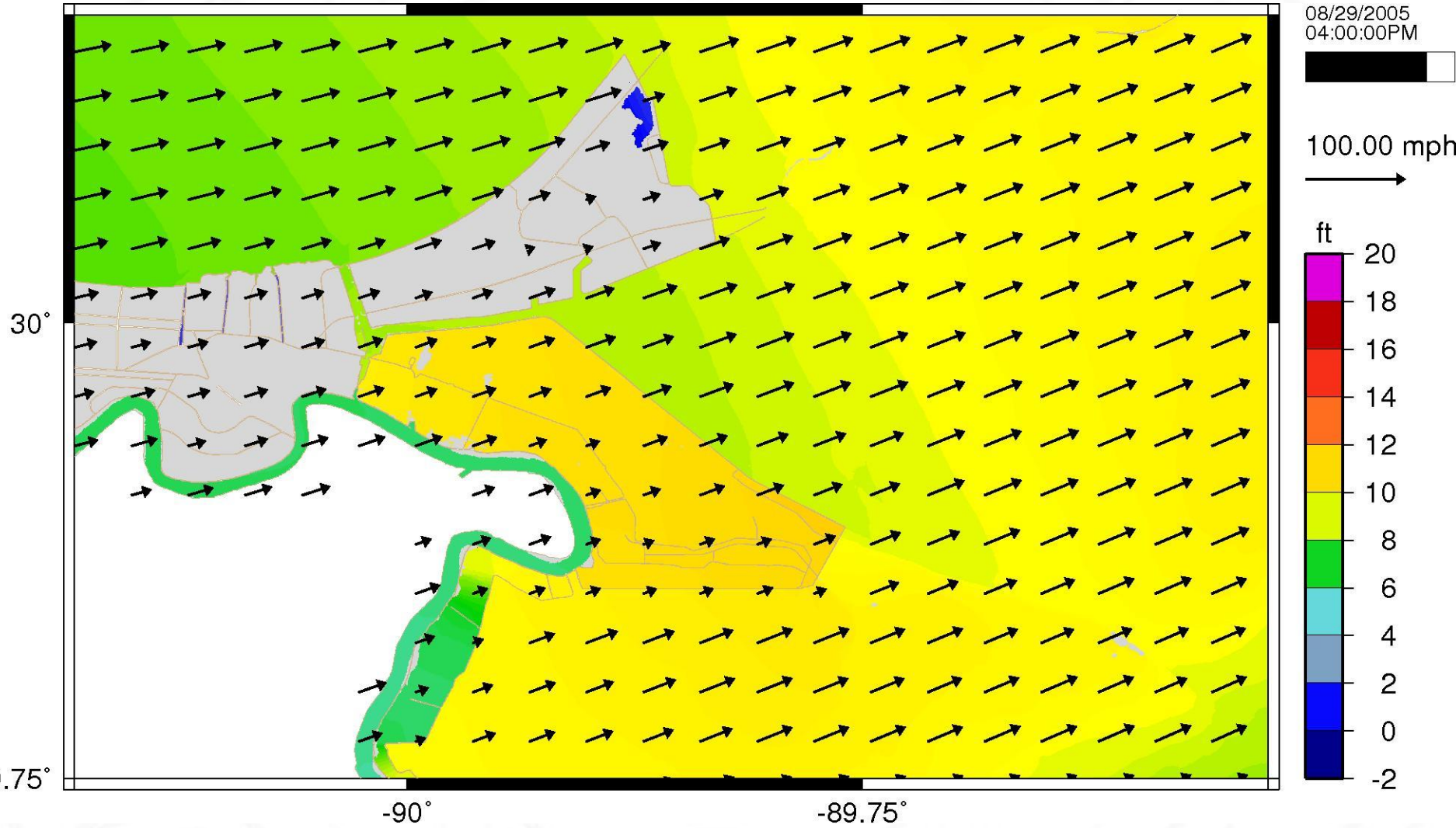


Figure 16m

8/29/2005 at 6 pm CDT

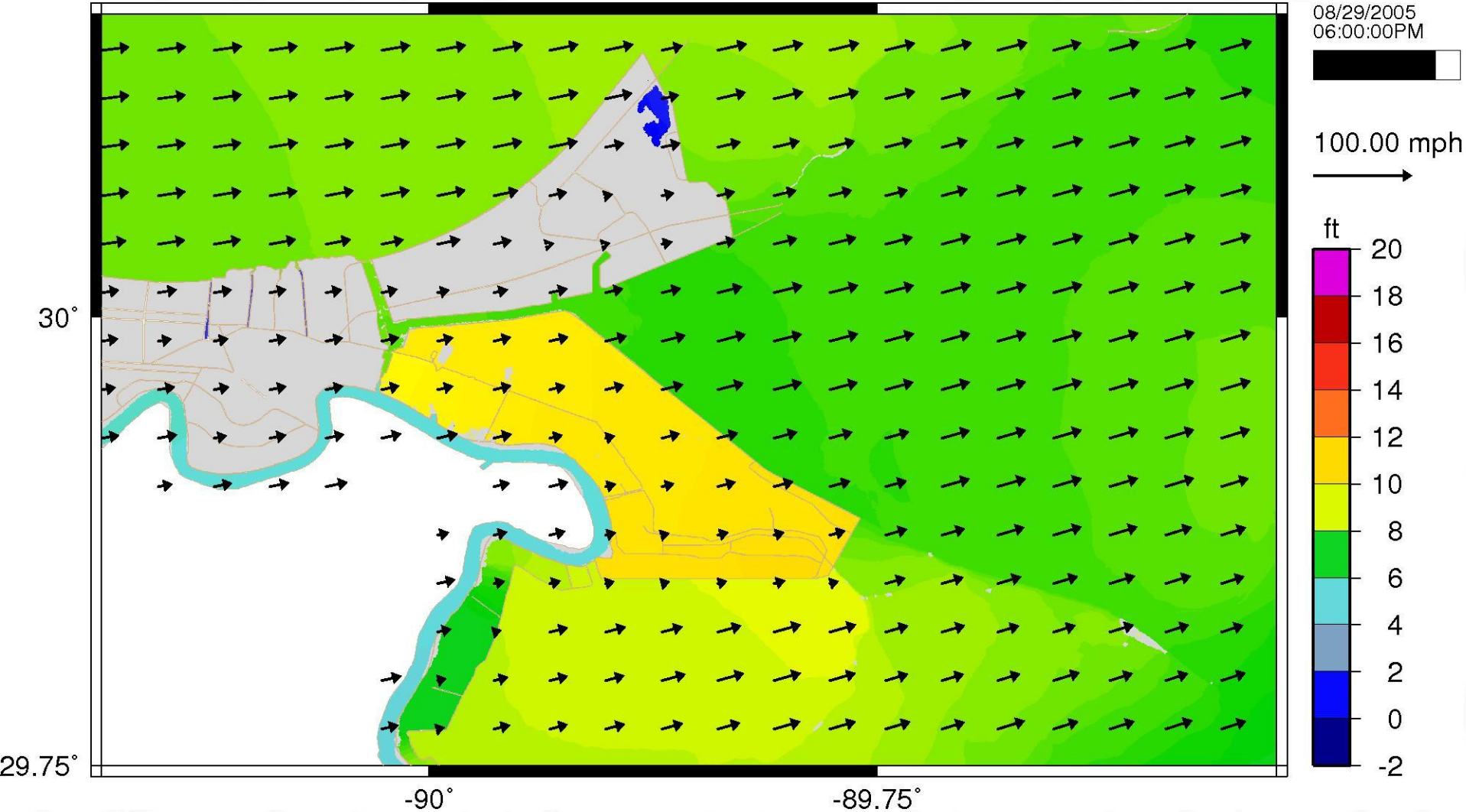


Figure 16n

8/29/2005 at 8 pm CDT

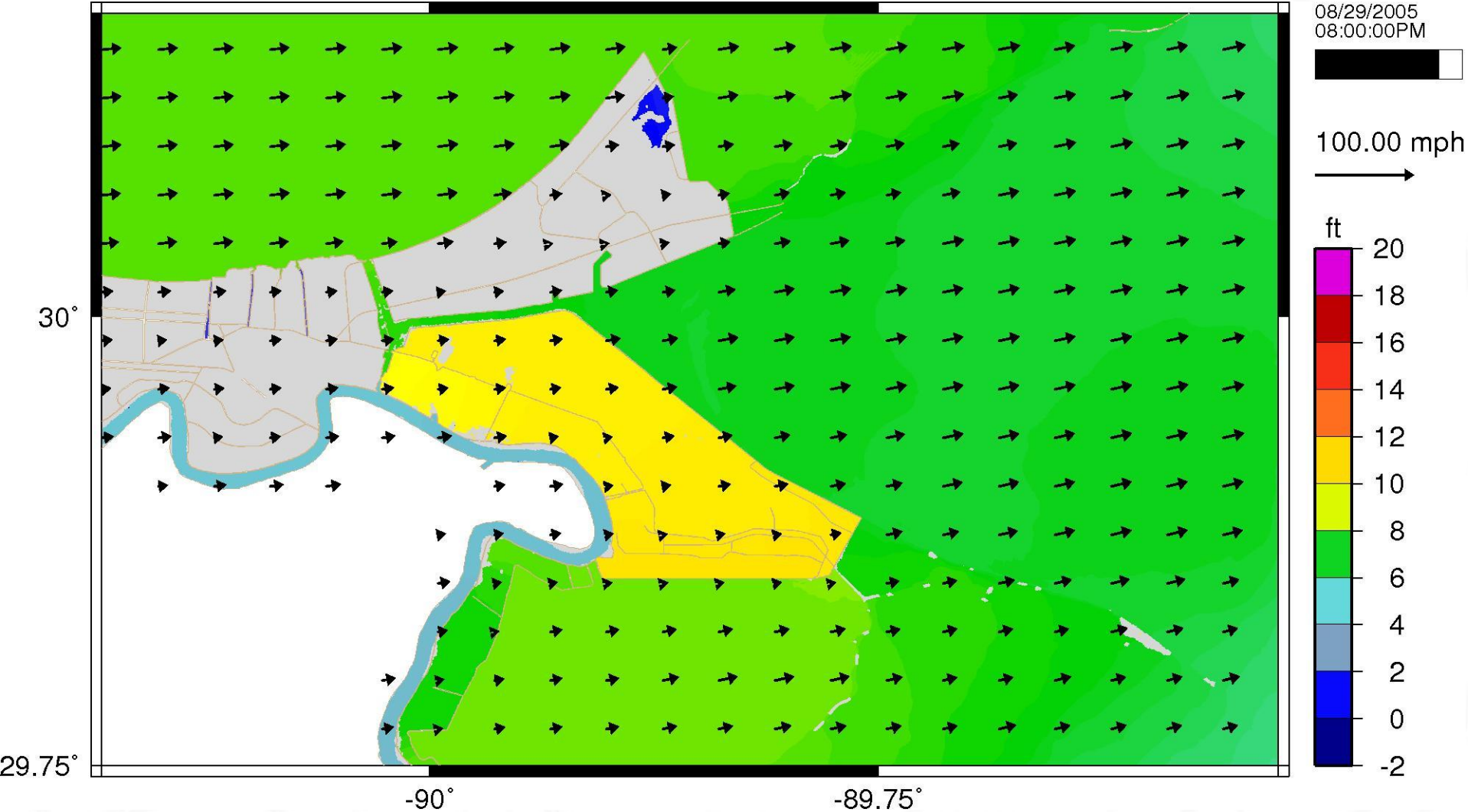


Figure 160

8/29/2005 at 10 pm CDT

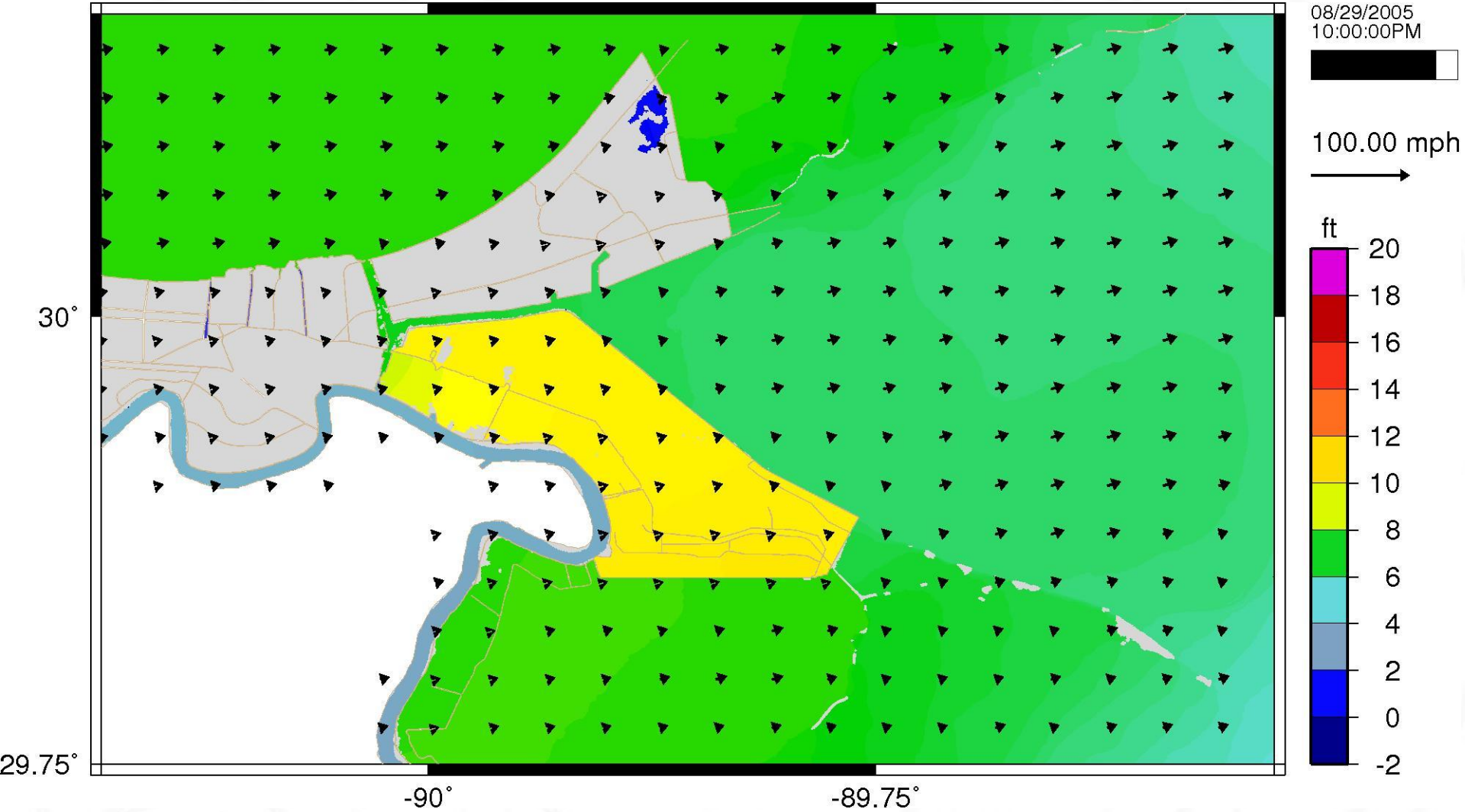


Figure 16p

8/30/2005 at 12 am CDT

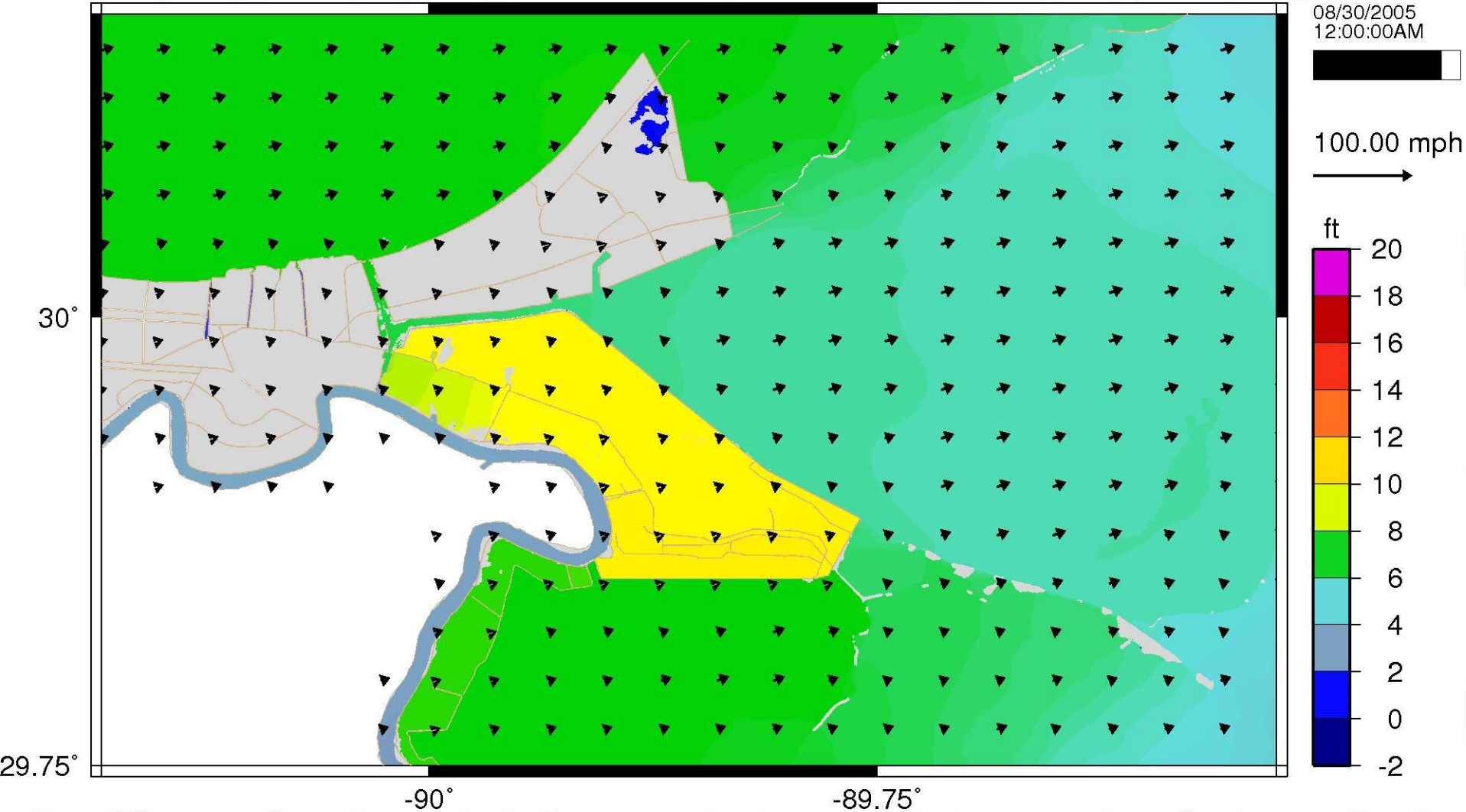


Figure 16q