

## Katrina Hindcast - Scenario A1: Regional surge

- The next set of slides (Figures 13a-q) depict at discrete time steps Hurricane Katrina's storm surge as it developed in the region.
- Easterly winds pushed up to 18 ft of water onto the Mississippi-Alabama shelf and against Plaquemine Parish and the St. Bernard Polder MRGO Reach 2 levees.
- The surge is then directed towards the north and reinforced by the very intense southerly winds resulting in the massive 29 ft surge along the Mississippi coast.

8/29/2005 at 2 am CDT

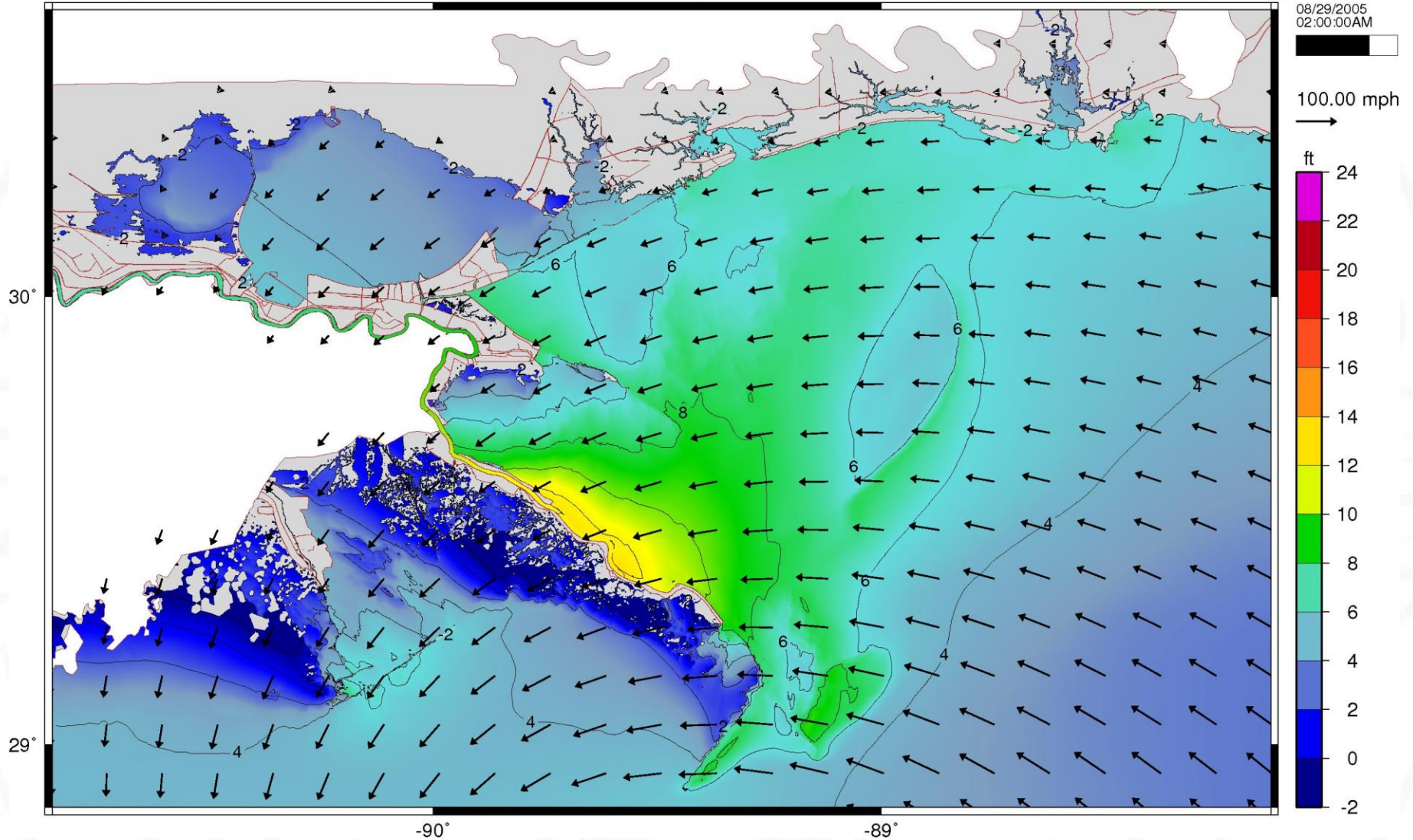


Figure 13a



8/29/2005 at 4 am CDT

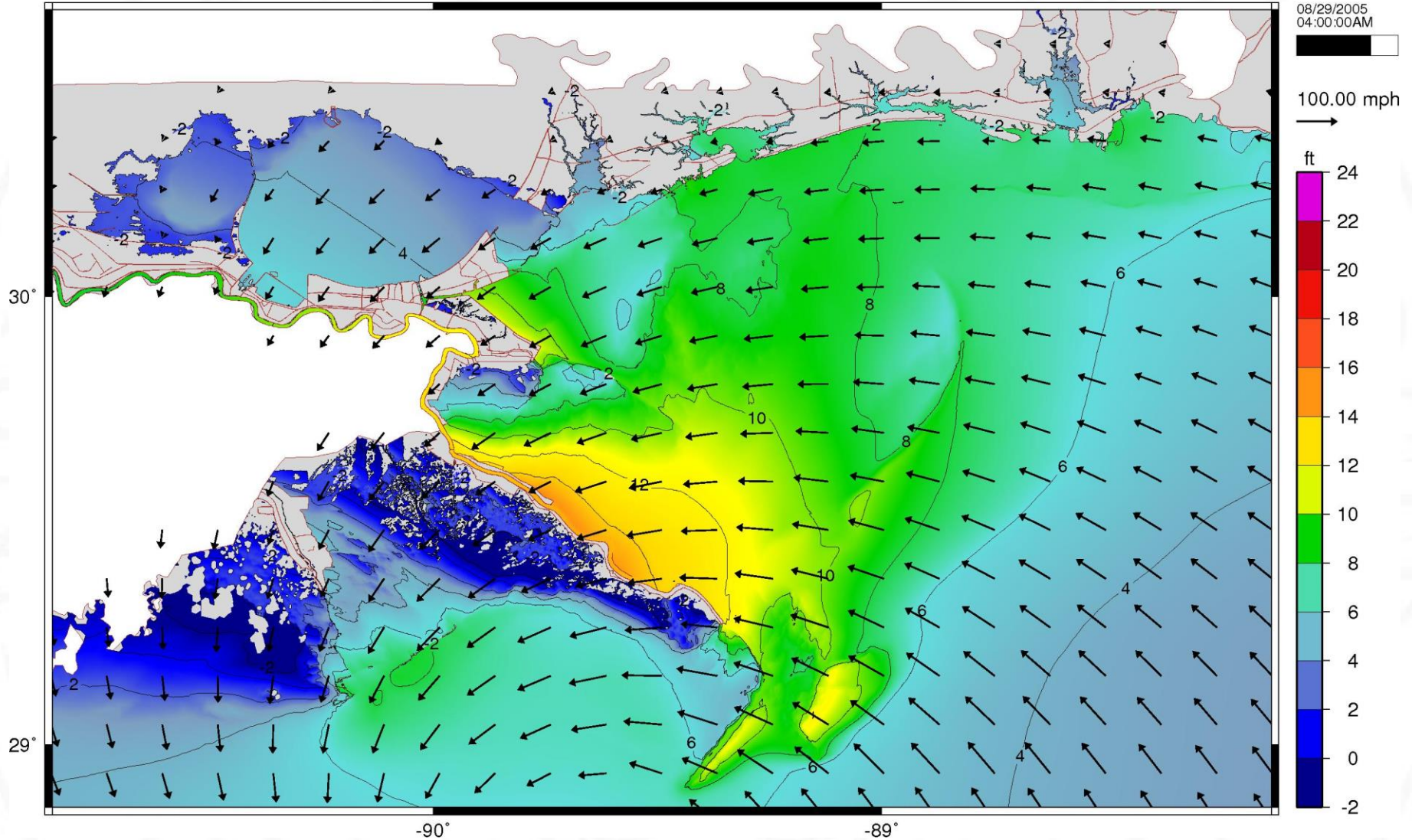


Figure 13b

8/29/2005 at 6 am CDT

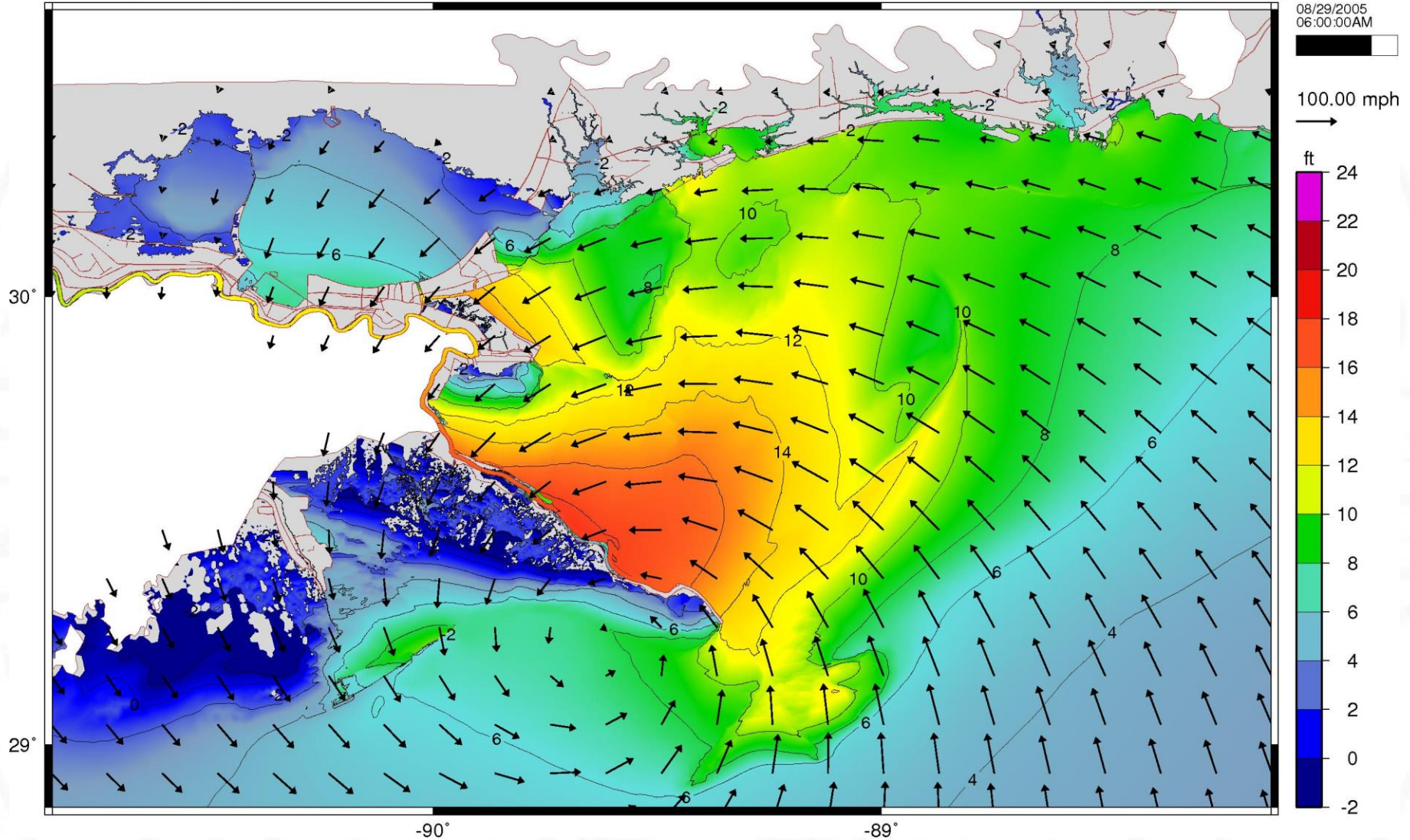


Figure 13c



8/29/2005 at 7 am CDT

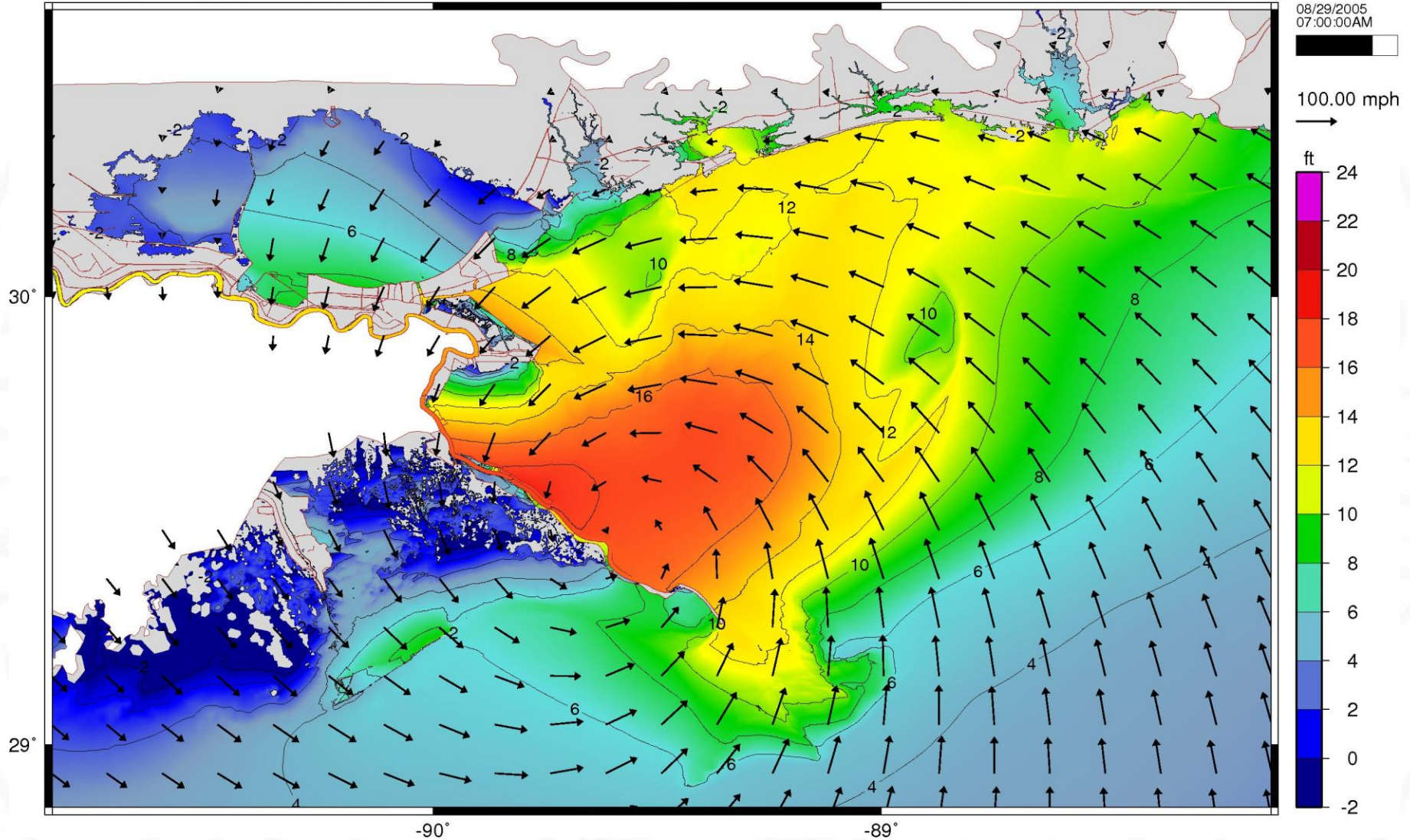


Figure 13d



8/29/2005 at 8 am CDT

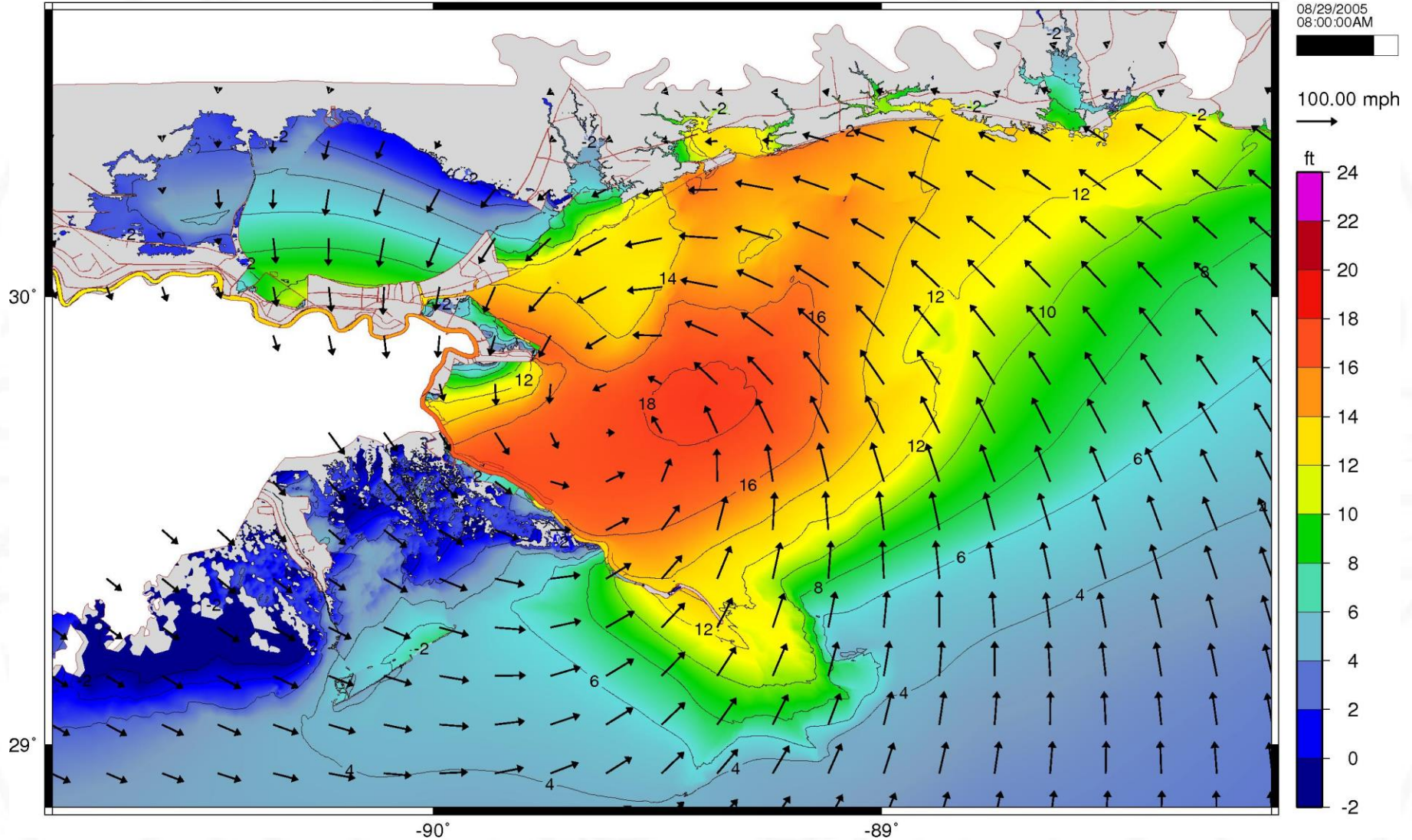


Figure 13e

8/29/2005 at 9 am CDT

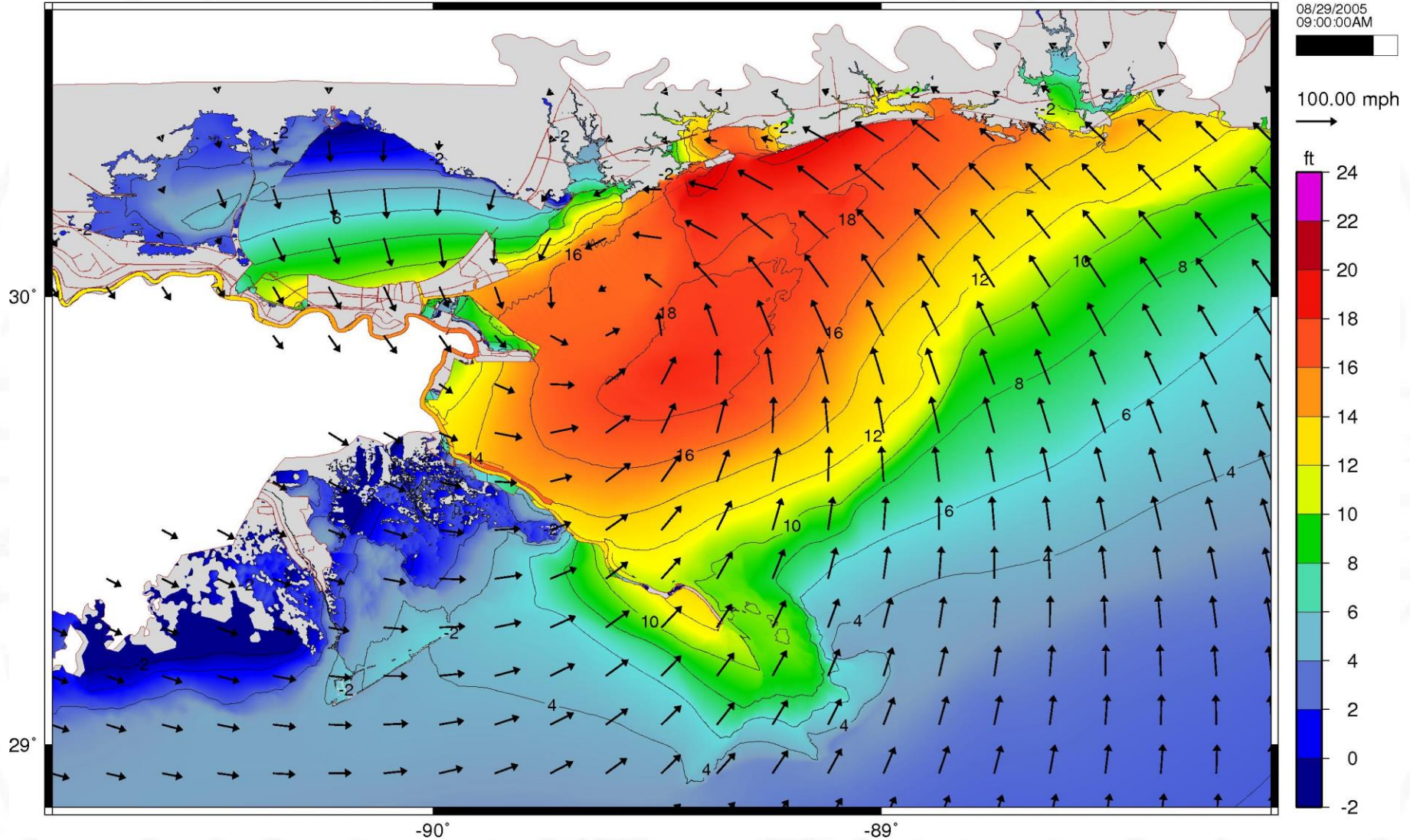


Figure 13f



8/29/2005 at 10 am CDT

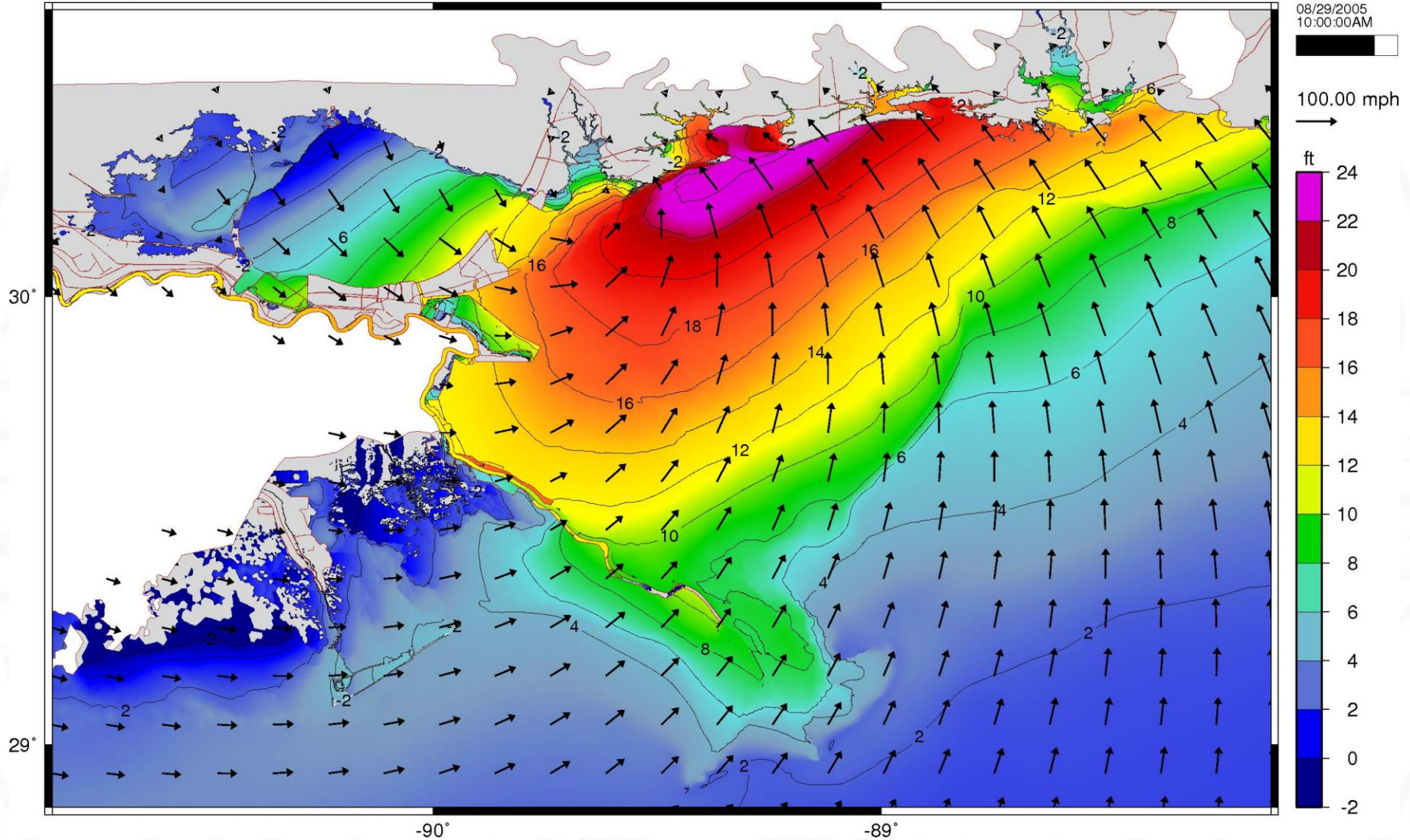


Figure 13g



8/29/2005 at 11 am CDT

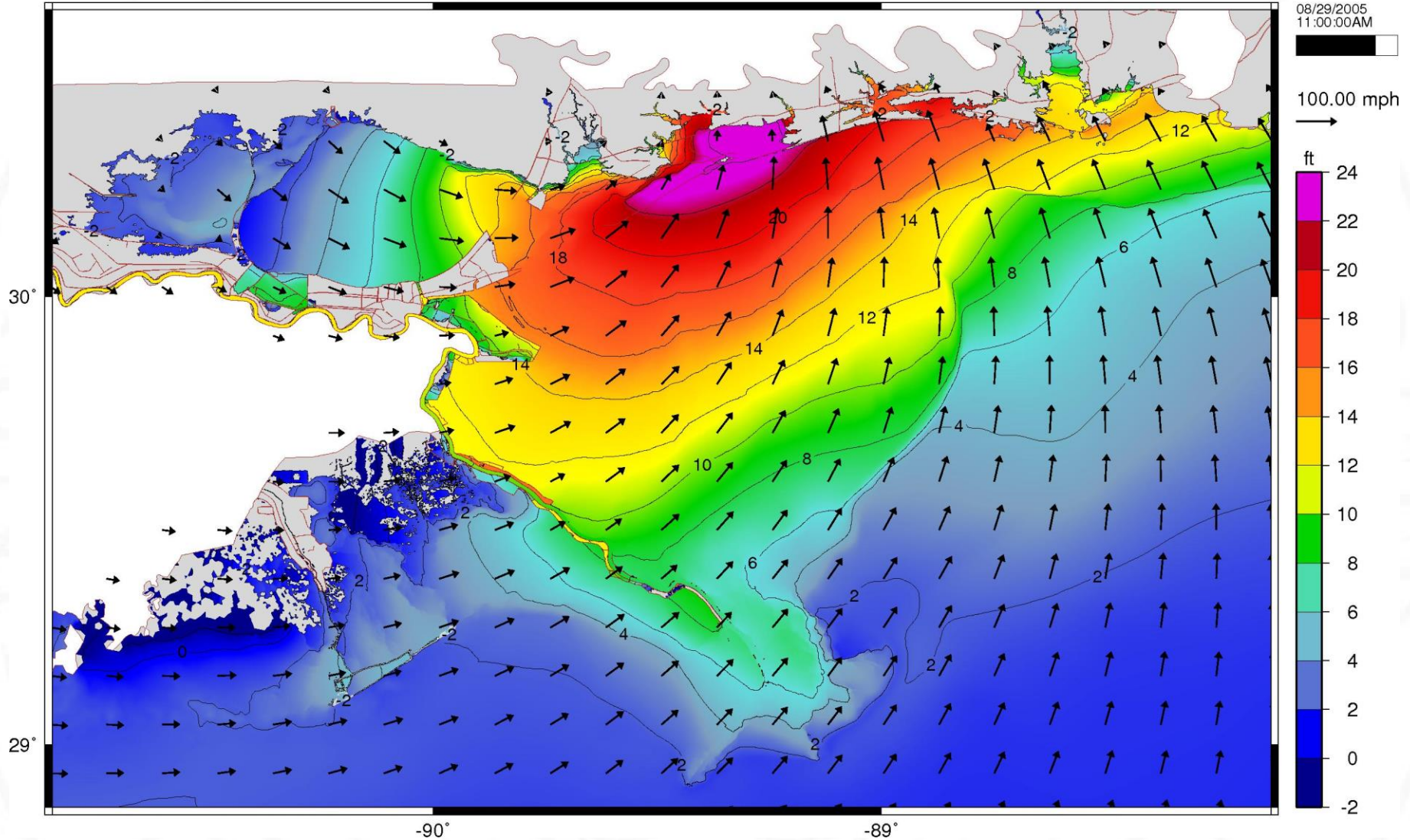


Figure 13h

8/29/2005 at 12 pm CDT

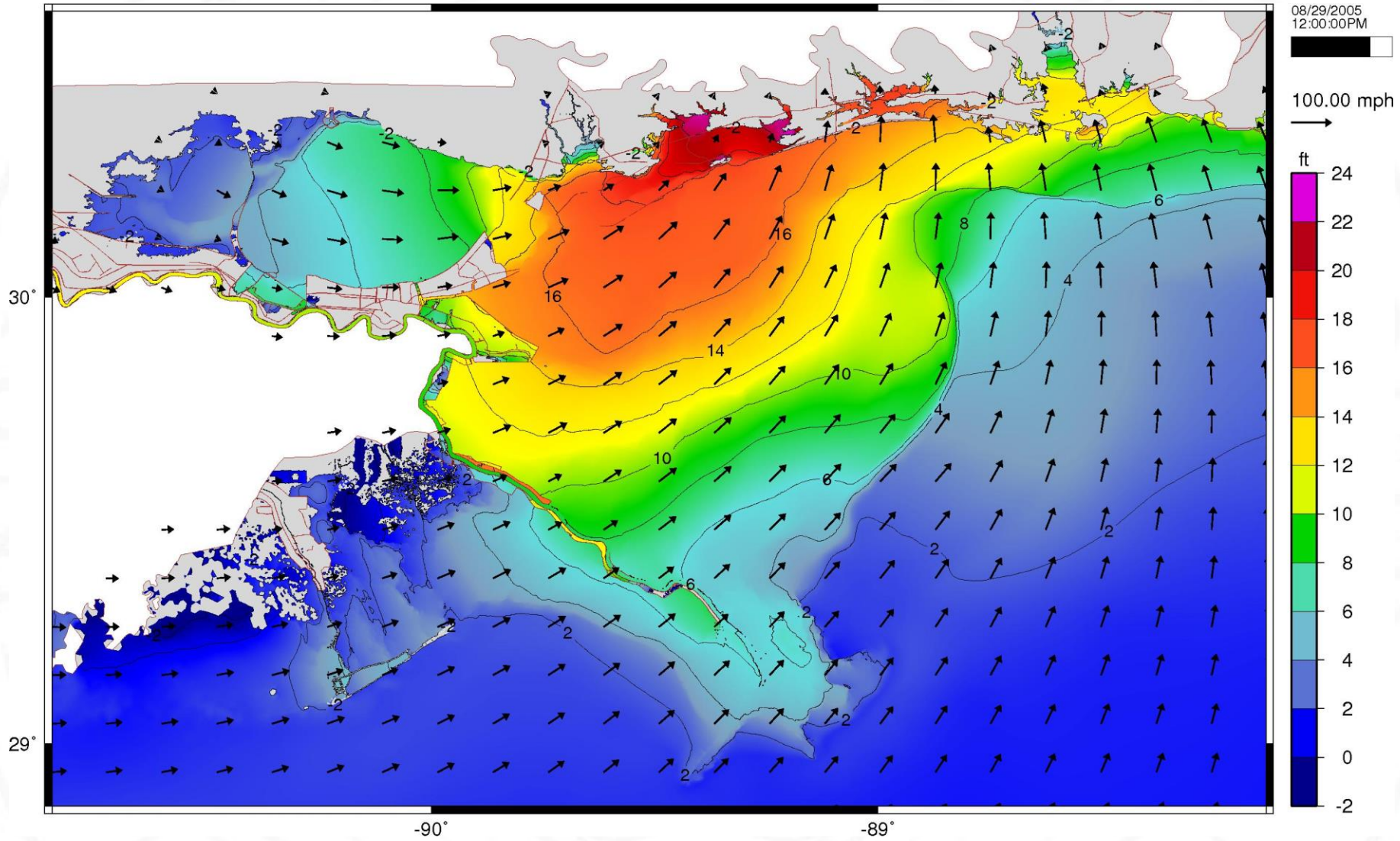


Figure 13i



8/29/2005 at 1 pm CDT

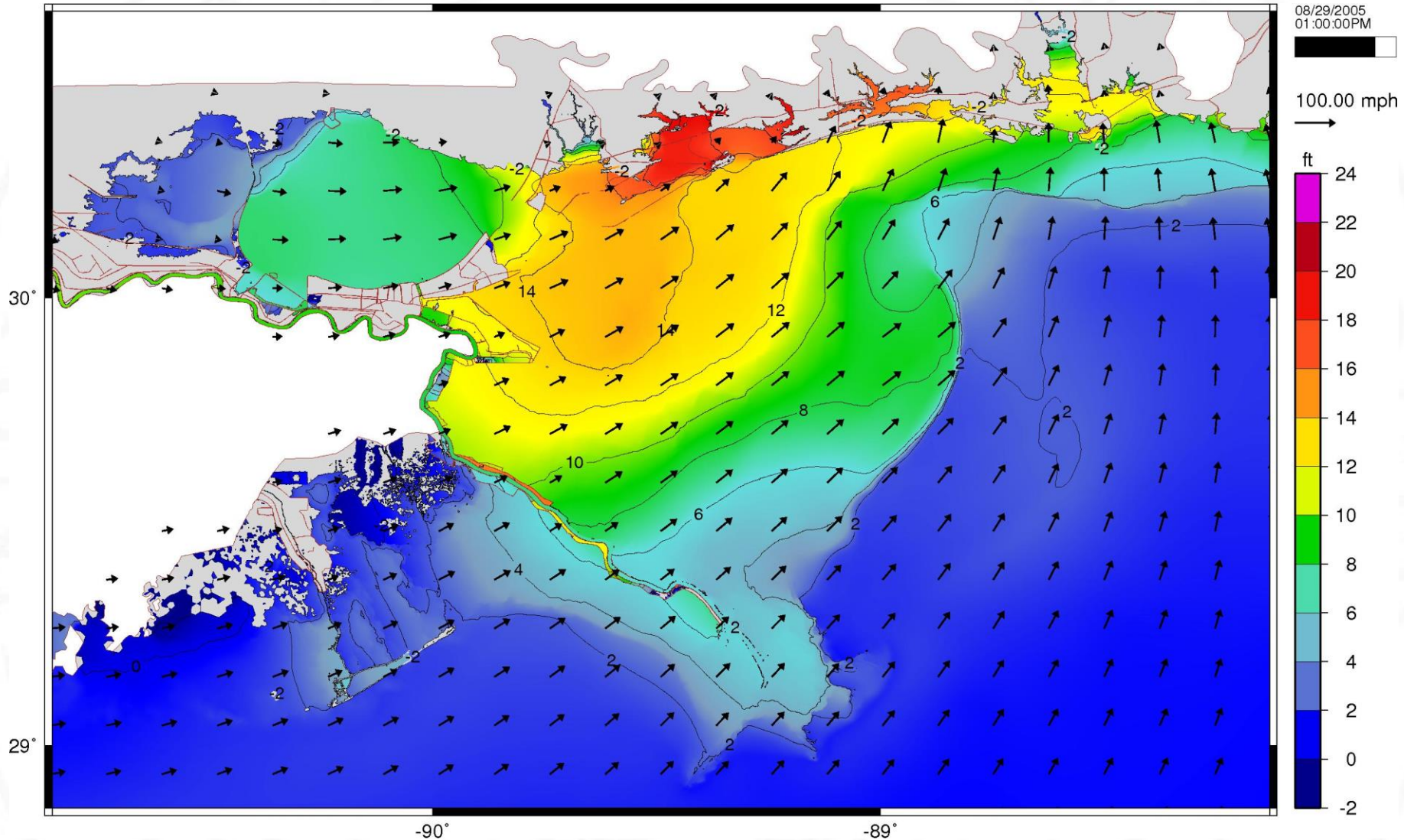


Figure 13j

8/29/2005 at 2 pm CDT

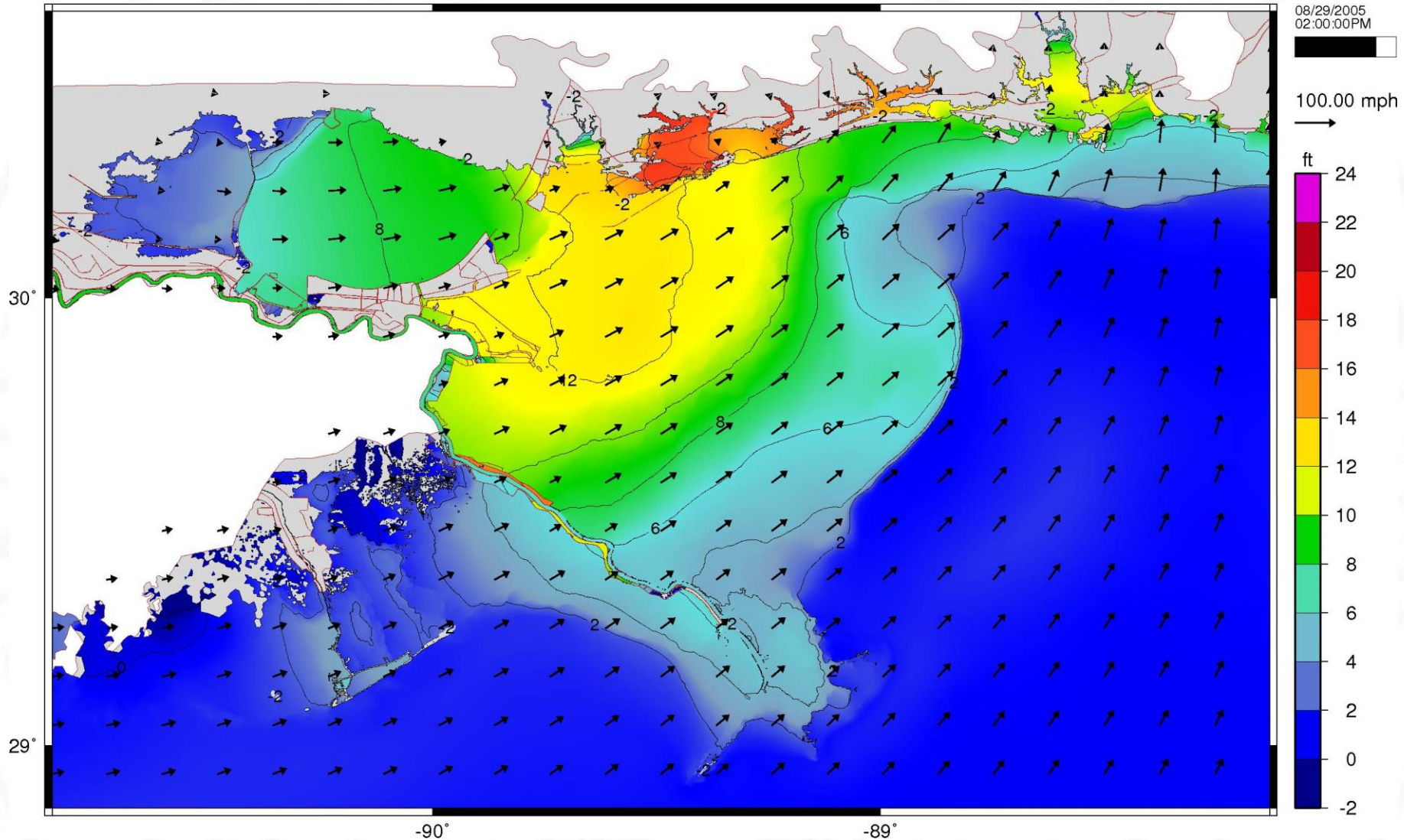


Figure 13k



8/29/2005 at 3 pm CDT

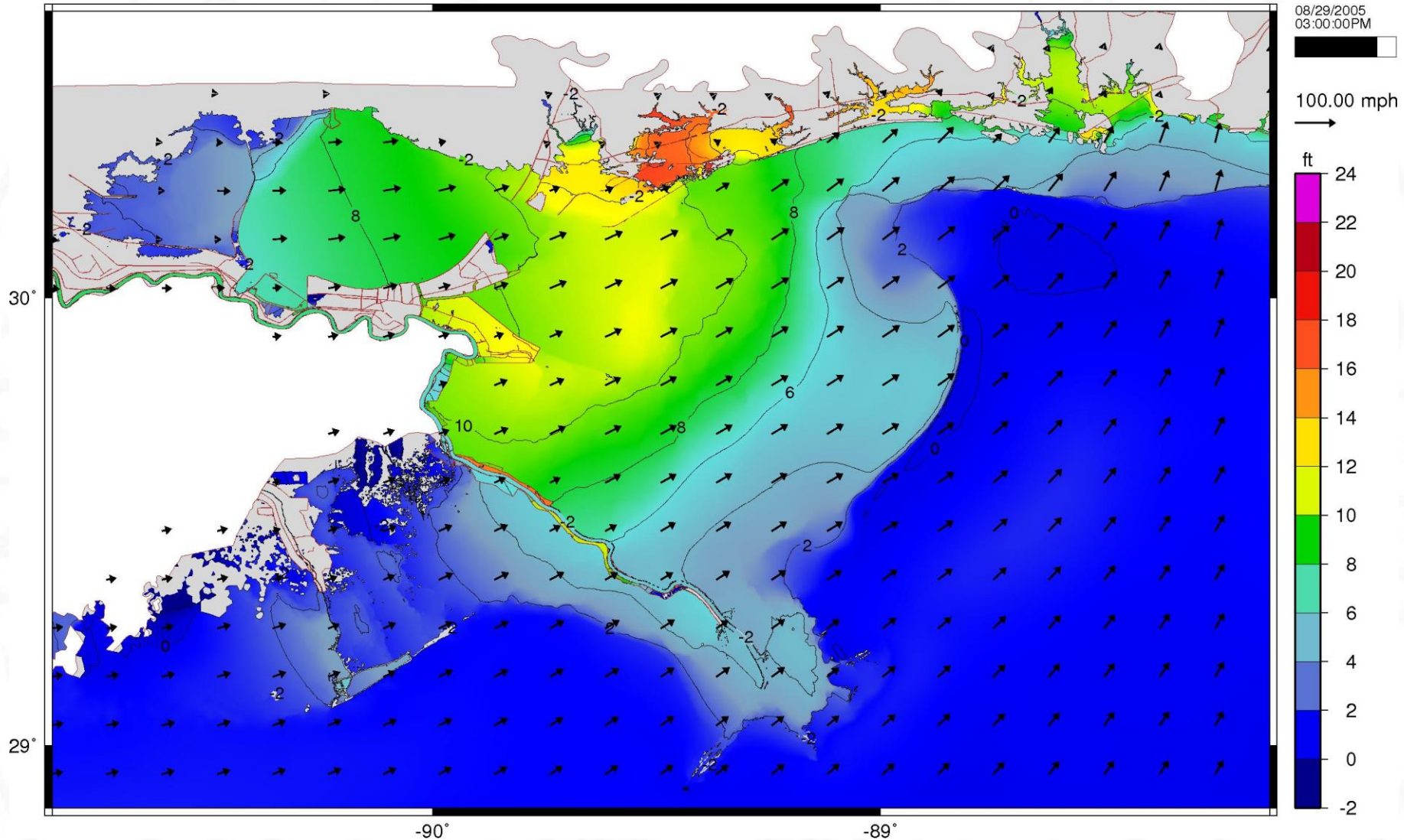


Figure 13I

8/29/2005 at 4 pm CDT

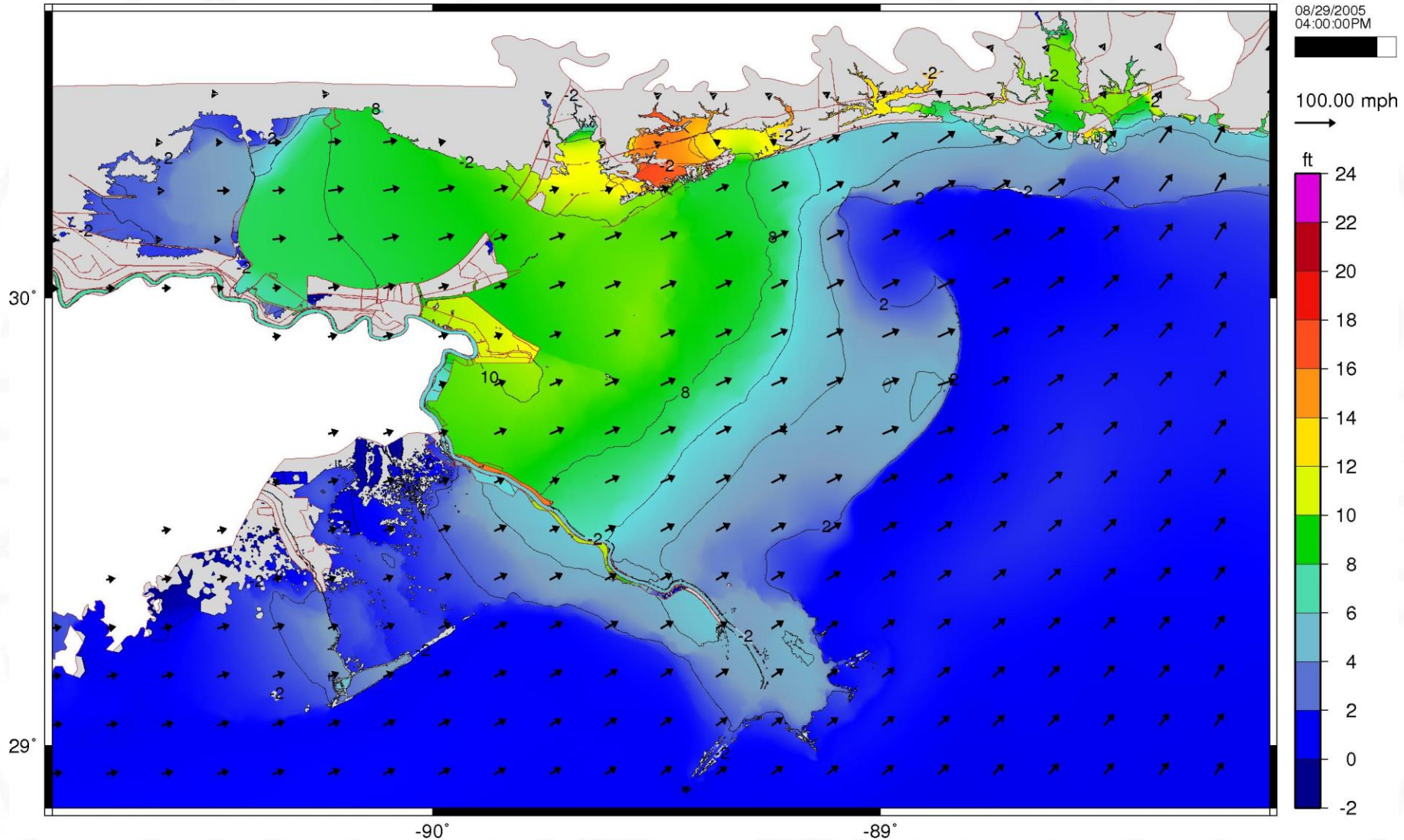


Figure 13m



8/29/2005 at 6 pm CDT

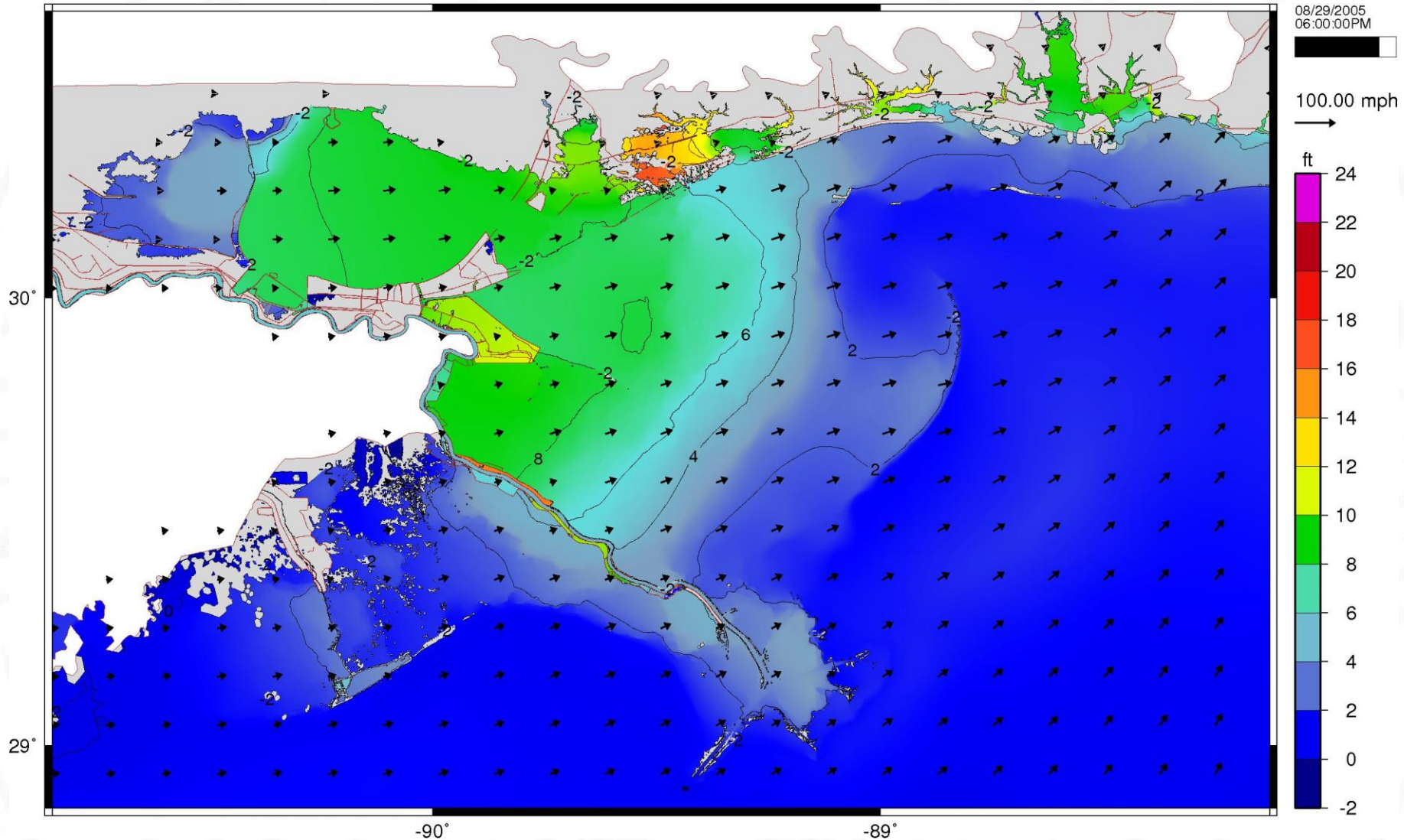


Figure 13n

8/29/2005 at 8 pm CDT

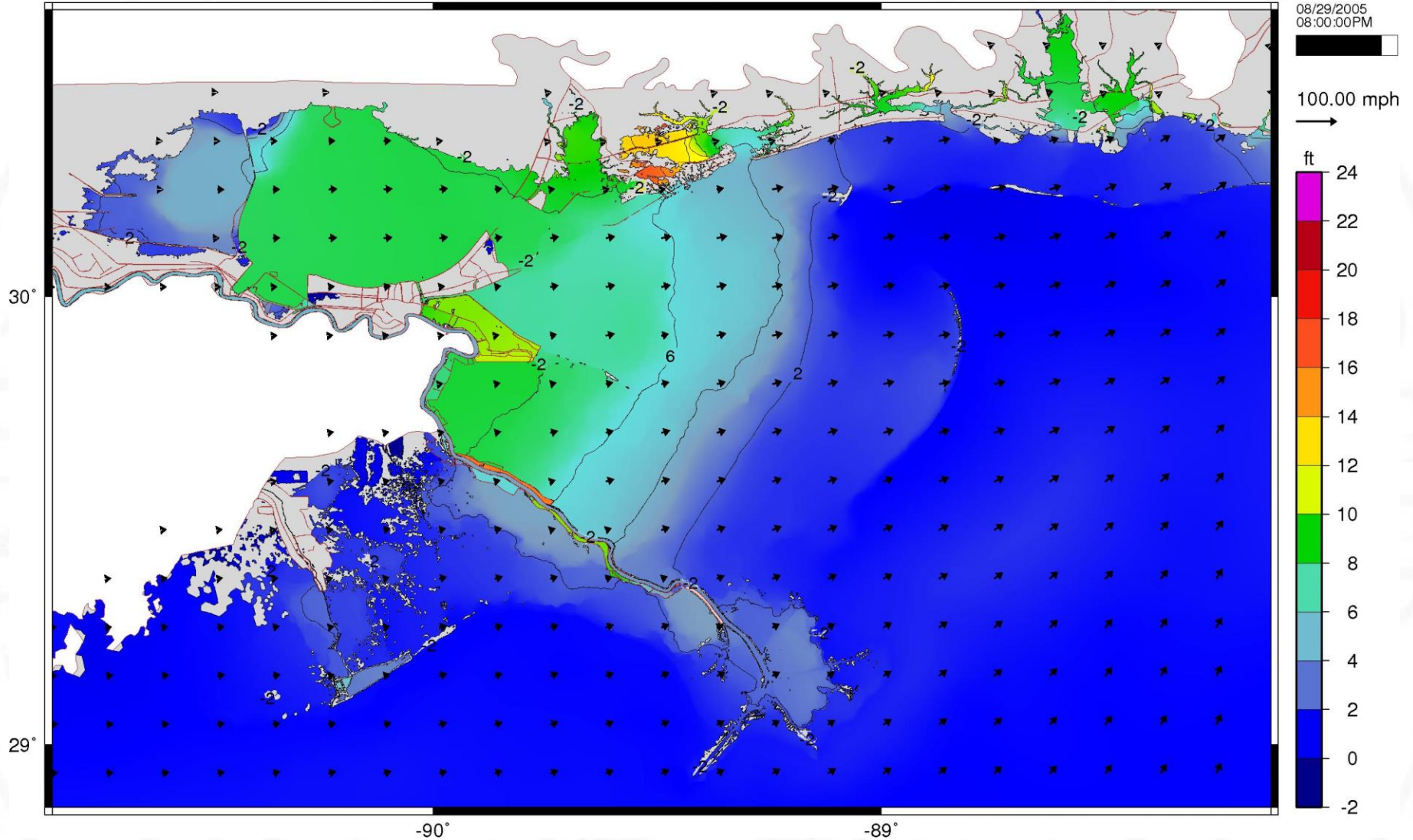


Figure 13o



8/29/2005 at 10 pm CDT

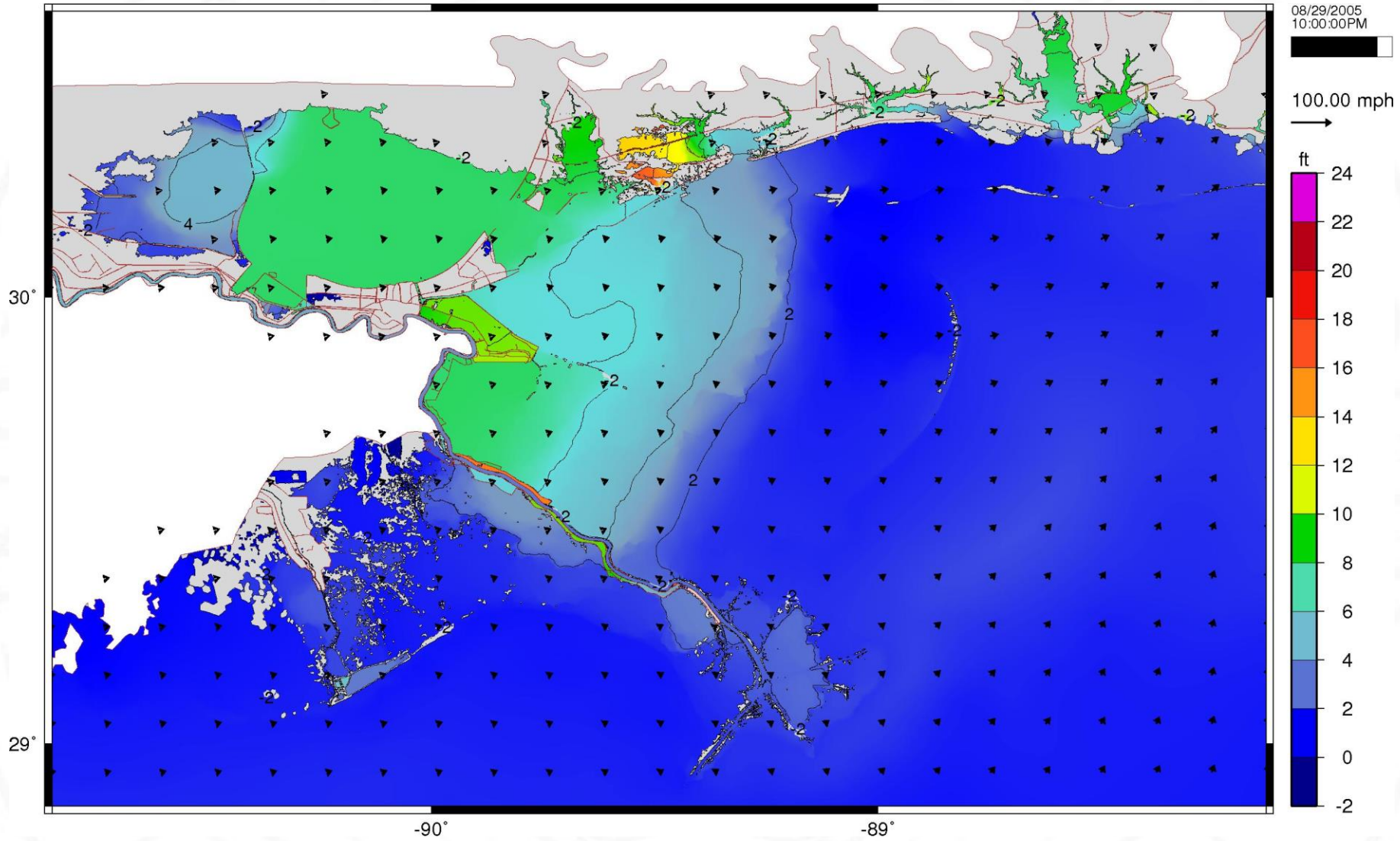


Figure 13p

8/30/2005 at 12 am CDT

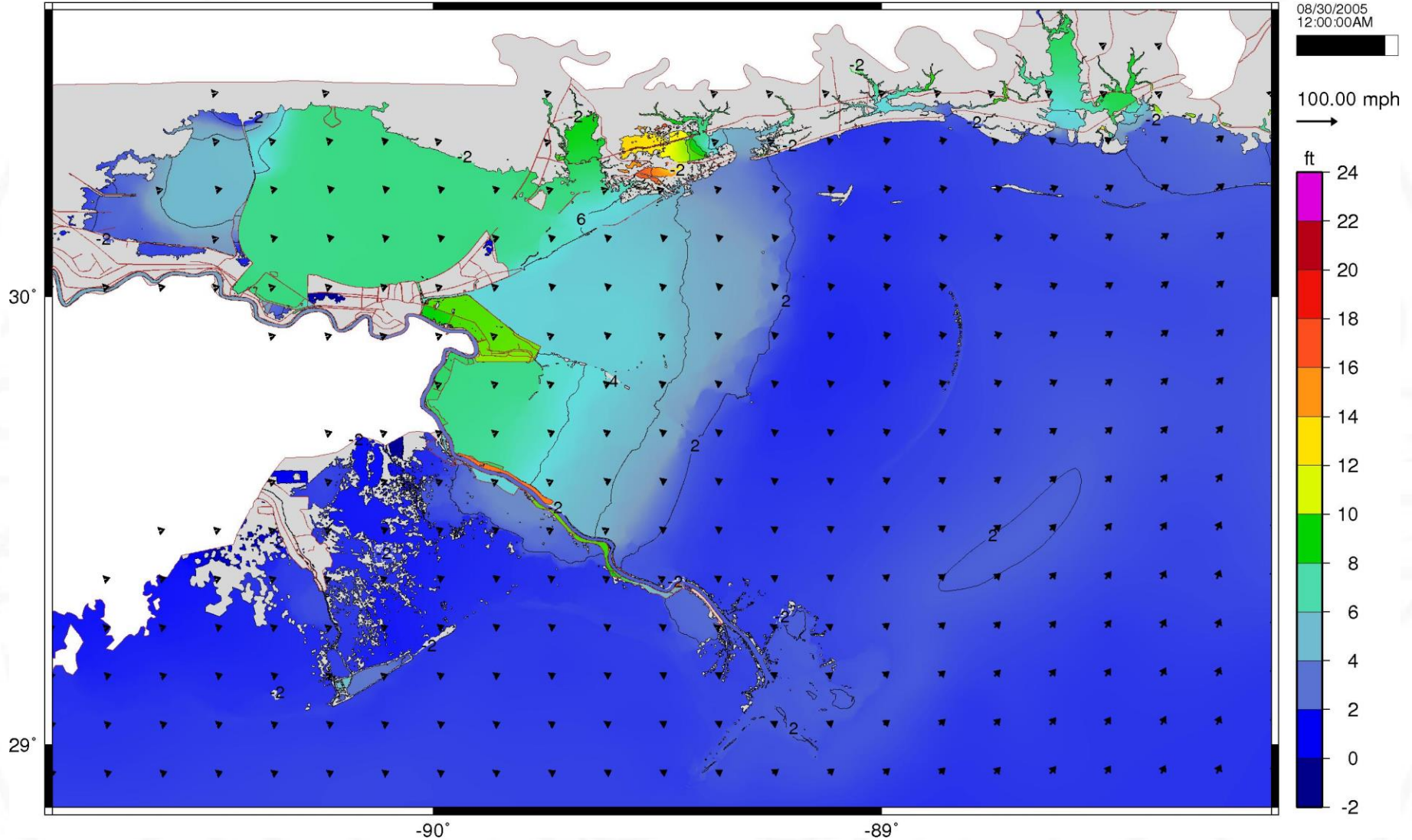


Figure 13q



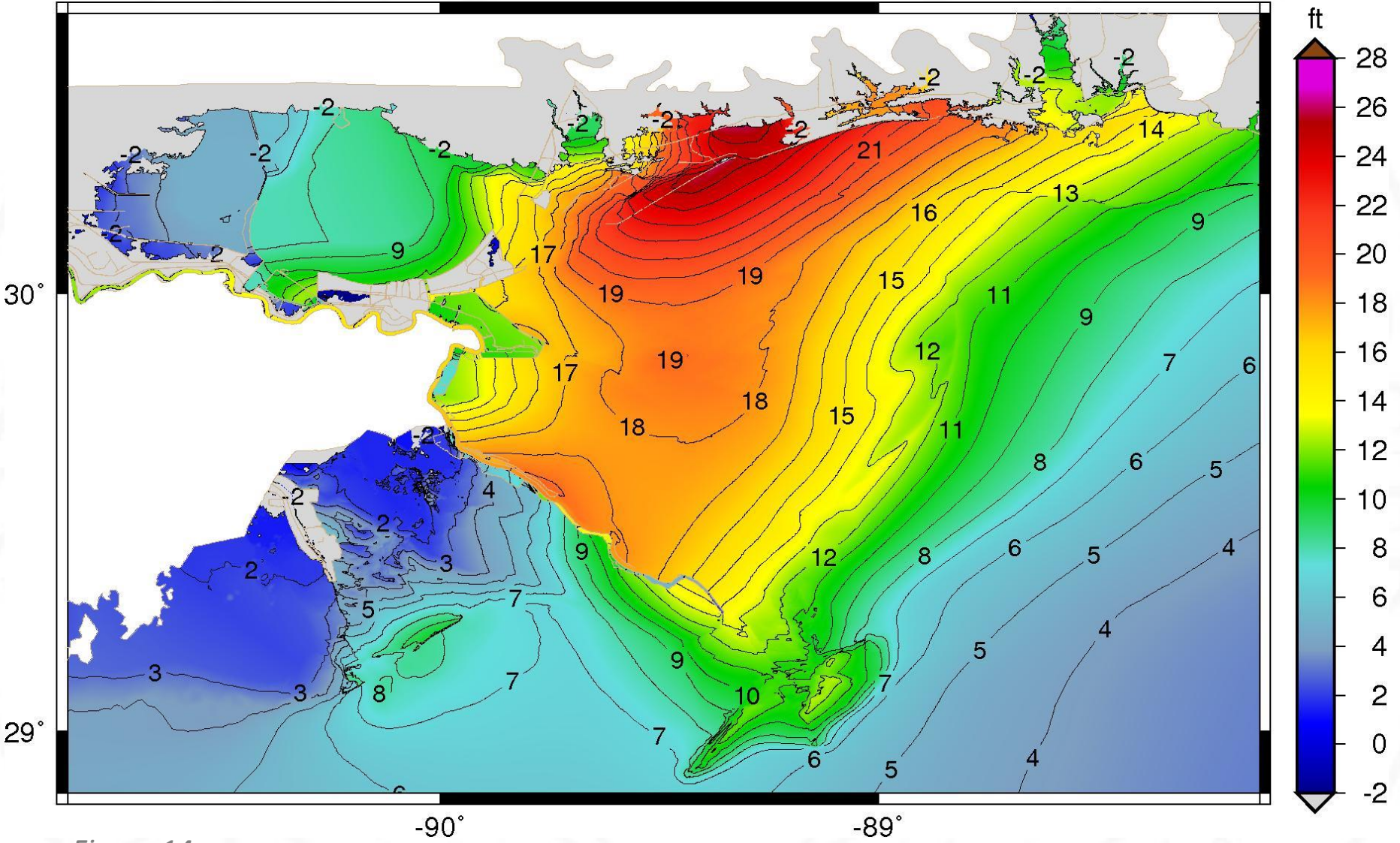


Figure 14

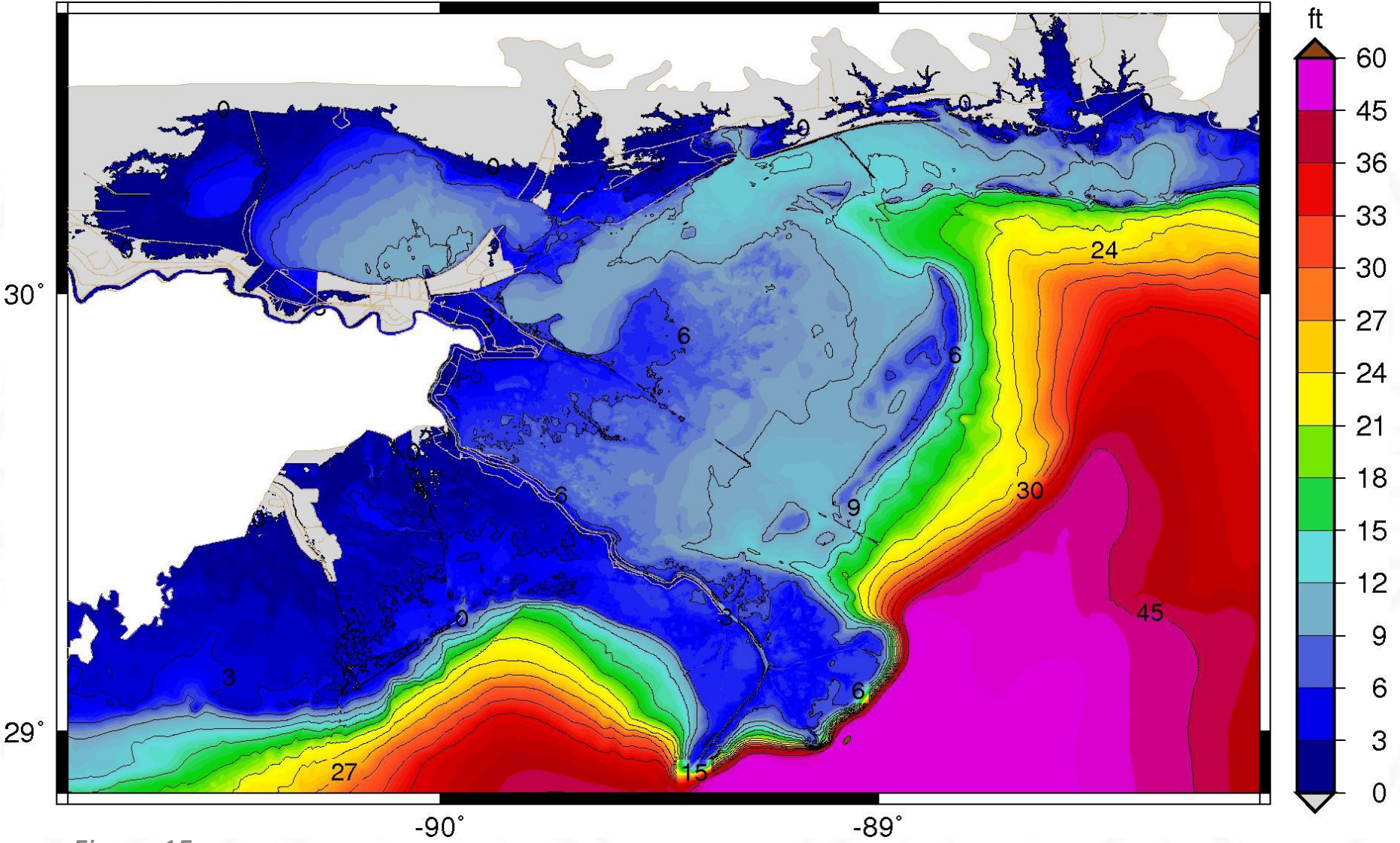


Figure 15