

WALL ALIGNMENT B/L OFFSETS			
EB/L	WB/L	☉ I-WALL OFFSETS	W/L OFFSETS
70+26.77	-----	+2.59'	+1.79'
84+20.31	-----	+4.14'	+3.27'
-----	70+47.00	+7.02'	+6.15'
-----	74+92.00	+10.70'	+9.83'
-----	84+50.00	+8.12'	+7.25'

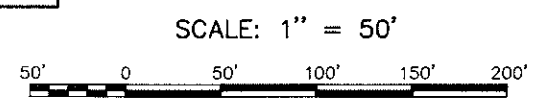
(+) OFFSET CANAL SIDE OF B/L
 (-) OFFSET LAND SIDE OF B/L

EXISTING FACILITIES					
ITEM (▲)	DESCRIPTION	STA. WEST	STA. EAST	OWNER	DISPOSITION
CC-1	COX CABLE (AERIAL)	70 + 32.94	70 + 01.86	COX CABLE	NA
G-1	6" UTILIZATION PRESSURE LINE	69 + 30.30	68 + 99.33	N.O.P.S.I.	NA
G-2	10" HIGH PRESSURE LINE	69 + 28.90	68 + 98.23	N.O.P.S.I.	NA
W-1	12" WATER MAIN	70 + 24.04	69 + 92.08	S&WB	NA
FL-432	PRIMARY 25 CYCLE POWER CABLE	-----	70 + 00.00 TO 84 + 71.00	S&WB	NA (■)
FL-340	PRIMARY 25 CYCLE POWER CABLE	-----	70 + 20.27 TO 84 + 40.35	S&WB	RBGC
FL-400	PRIMARY 25 CYCLE POWER CABLE	70 + 37.50 TO 84 + 64.22	-----	S&WB	RBGC
P-1	AERIAL POWER LINE	70 + 32.94	70 + 01.86	N.O.P.S.I.	(*)

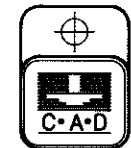
(*) TO BE DE-ENERGIZED BY N.O.P.S.I.
 (▲) EXISTING FACILITIES SHOWN IN HEXAGON (☉)
 TO BE LOCATED BY THE GOVERNMENT CONTRACTOR PRIOR TO SETTING THE TEMPORARY FENCE POSTS.
 (■) TO BE LOCATED BY THE GOVERNMENT CONTRACTOR PRIOR TO SETTING THE TEMPORARY FENCE POSTS.

MIRABEAU AVE. MAY BE USED FOR ACCESS

NOTE:
 - THE GOVERNMENT CONTRACTOR IS NOT TO DISTURB ANY UTILITIES IN THE VICINITY OF THIS PROJECT MARKED BY "NA" IN THE DISPOSITION COLUMN IN THE EXISTING FACILITIES TABLE.
 - LIMIT OF FLOODWALL REPRESENTS ☉ OF JOINT BETWEEN NEW I-WALL SECTION AND THE CONNECTION TO THE EXISTING I-WALL.



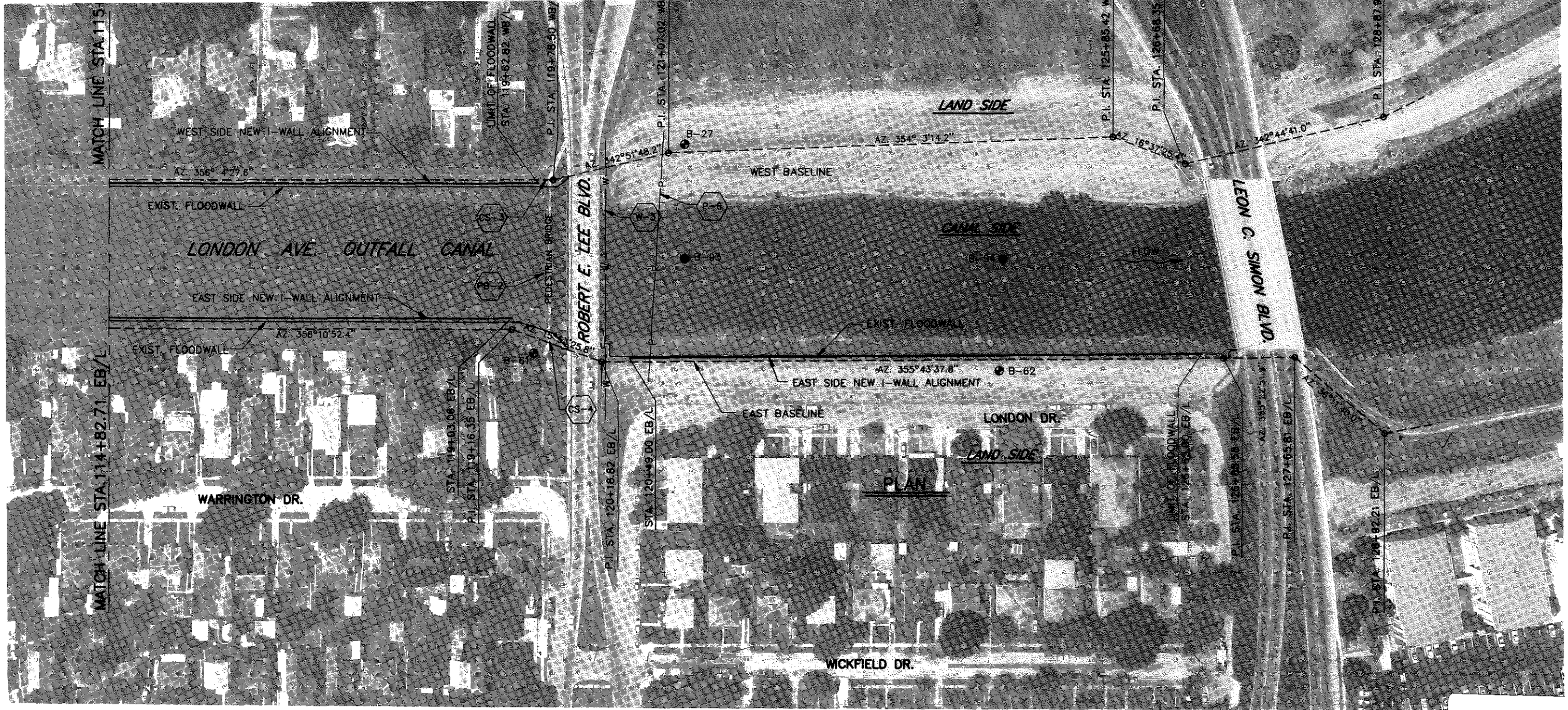
Safety is a Part of Your Contract



BKI-08745

SYMBOL				DESCRIPTION				DATE		APPROVED	
REVISIONS											
U. S. ARMY ENGINEER DISTRICT, NEW ORLEANS CORPS OF ENGINEERS NEW ORLEANS, LOUISIANA											
BURK - KLEINPETER, INC. <small>ENGINEERS, ARCHITECTS, PLANNERS, ENVIRONMENTAL SCIENTISTS</small> NEW ORLEANS, LOUISIANA						GOTECH, INC. <small>CONSULTING ENGINEERS</small> BATON ROUGE, LOUISIANA					
LAKE PONTCHARTRAIN, LA. AND VICINITY HIGH LEVEL PLAN LONDON AVE. OUTFALL CANAL, PARALLEL PROTECTION MIRABEAU AVE. TO ROBERT E. LEE BLVD., WEST BANK MIRABEAU AVE. TO LEON C. SIMON BLVD., EAST BANK ORLEANS PARISH, LOUISIANA											
PLAN											
DESIGNED BY: R.CHOPIN		DATE: 11/93		PLOT SCALE: 600		PLOT DATE: 11/23/93					
DRAWN BY: BINH LE		CHECKED BY: S.L.SHAH		CADD FILE: 4029504.DGN		FILE NO. H-4-40295					
SUBMITTED BY:		SOLICITATION NO.		DWG. 4 OF 4							

- NOTES:**
- FOR GENERAL NOTES, SEE DWG. 2.
 - FOR PROFILES, SEE DWGS. 12 THRU 14
 - FOR LOCATIONS OF EXISTING TO NEW I-WALL CONNECTIONS, SEE DWG. 20
 - FOR ELECTRIC FEEDER RELOCATION, SEE DWGS. 46-50
 - FOR BORING LOGS, SEE DWGS. 54-59



ROBERT E. LEE BLVD. AND LEON C. SIMON BLVD. MAY BE USED FOR ACCESS.

BKI-08748

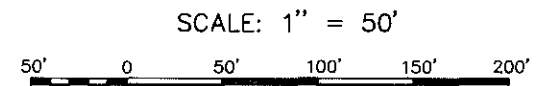
ALIGNMENT B/L OFFSETS		
B/L	☉ I-WALL OFFSETS	W/L OFFSETS
---	+11.24'	+10.37'
---	+11.67'	+10.80'
---	+5.50'	+4.63'
---	+4.50'	+3.63'
0.00	+4.12'	+3.25'
2.82	+4.03'	+3.16'

SIDE OF B/L
SIDE OF B/L

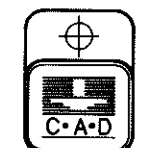
EXISTING FACILITIES					
ITEM(▲)	DESCRIPTION	STA. WEST	STA. EAST	OWNER	DISPOSITION
PB-2	PEDESTRIAN BRIDGE	119 + 72.58	119 + 55.27	DEPT. OF STREETS CITY OF N.O.	RMBGC
W-3	12" WATER MAIN	120 + 35.46	120 + 22.10	S&WB	NA
CS-3	CONCRETE STEPS	119 + 72.58	---	DEPT. OF STREETS CITY OF N.O.	RMBGC
CS-4	CONCRETE STEPS	---	119 + 55.27	DEPT. OF STREETS CITY OF N.O.	RMBGC
P-6	AERIAL POWER LINE	121 + 01.75	120 + 70.80	N.O.P.S.I.	(*)

NOTE: FOR NOTES AND LEGEND, SEE DWG. 1
 (▲) EXISTING FACILITIES SHOWN IN HEXAGON (○)
 (*) TO BE DE-ENERGIZED BY N.O.P.S.I.

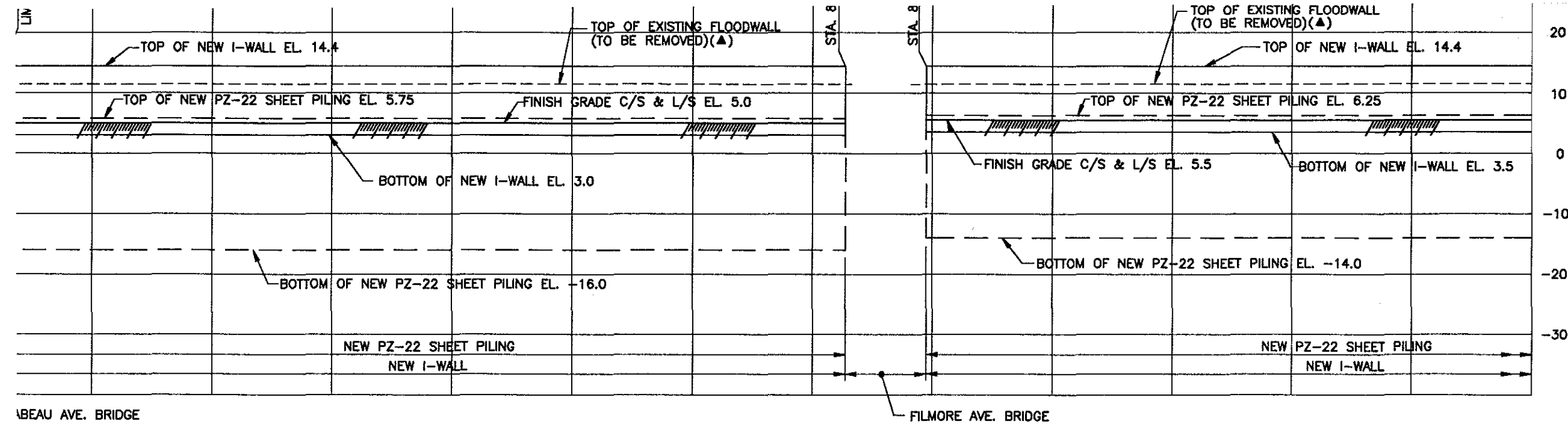
NOTE:
 - THE GOVERNMENT CONTRACTOR IS NOT TO DISTURB ANY UTILITIES IN THE VICINITY OF THIS PROJECT MARKED BY "NA" IN THE DISPOSITION COLUMN IN THE EXISTING FACILITIES TABLE.
 - LIMIT OF FLOODWALL REPRESENTS ☉ OF JOINT BETWEEN NEW I-WALL SECTION AND THE CONNECTION TO THE EXISTING I-WALL.



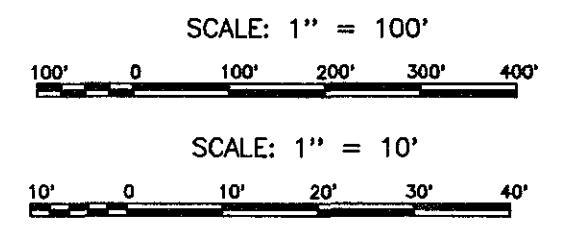
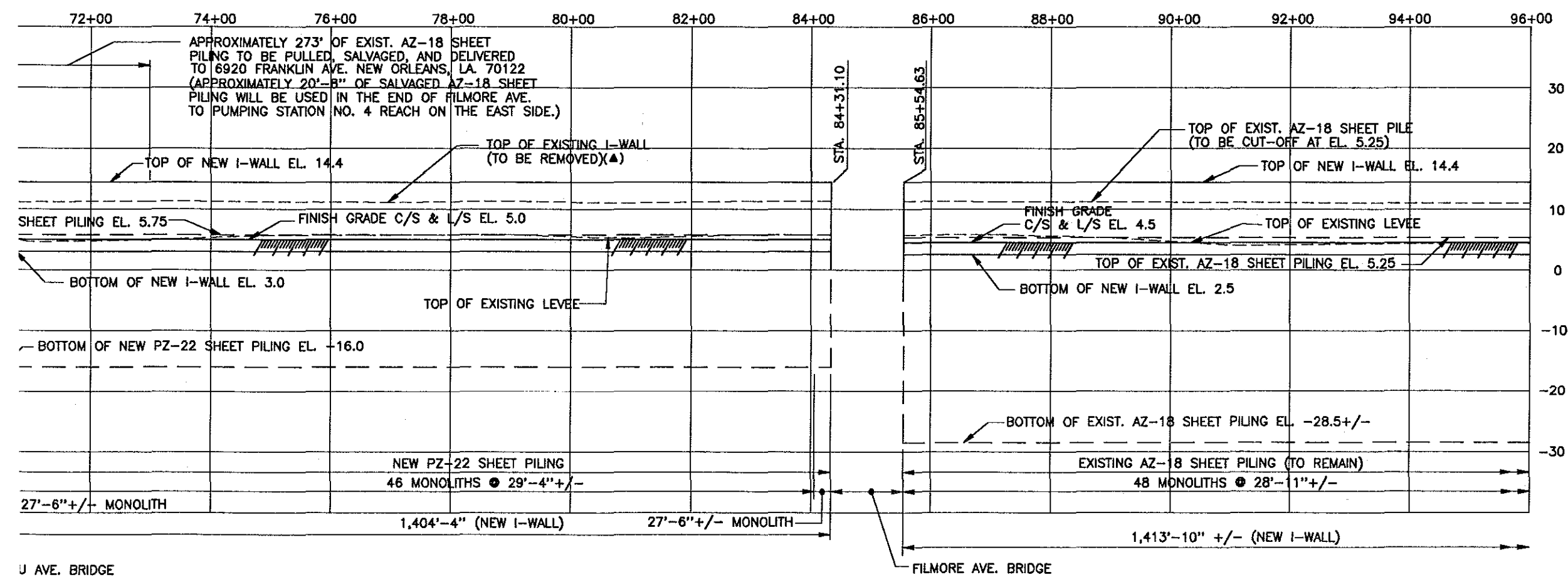
Safety is a Part
of Your Contract



SYMBOL	DESCRIPTION	DATE	APPROVED
REVISIONS			
U. S. ARMY ENGINEER DISTRICT, NEW ORLEANS CORPS OF ENGINEERS NEW ORLEANS, LOUISIANA			
BURK - KLEINPETER, INC. <small>CONSULTING ENGINEERS</small> NEW ORLEANS, LOUISIANA		GOTECH, INC. <small>CONSULTING ENGINEERS</small> BATON ROUGE, LOUISIANA	
LAKE PONTCHARTRAIN, LA. AND VICINITY HIGH LEVEL PLAN LONDON AVE. OUTFALL CANAL, PARALLEL PROTECTION MIRABEAU AVE. TO ROBERT E. LEE BLVD., WEST BANK MIRABEAU AVE. TO LEON C. SIMON BLVD., EAST BANK ORLEANS PARISH, LOUISIANA			
PLAN			
DESIGNED BY: R.CHOPIN	DATE: 11/93	PLOT SCALE: 600	PLOT DATE: 11/23/93
DRAWN BY: BINH LE	CADD FILE: 4029507.DGN	FILE NO. H-4-40295	
CHECKED BY: S.I.SHAH	SOLICITATION NO.		
SUBMITTED BY:	DWG. 7 OF		

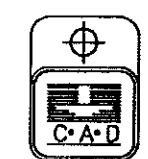


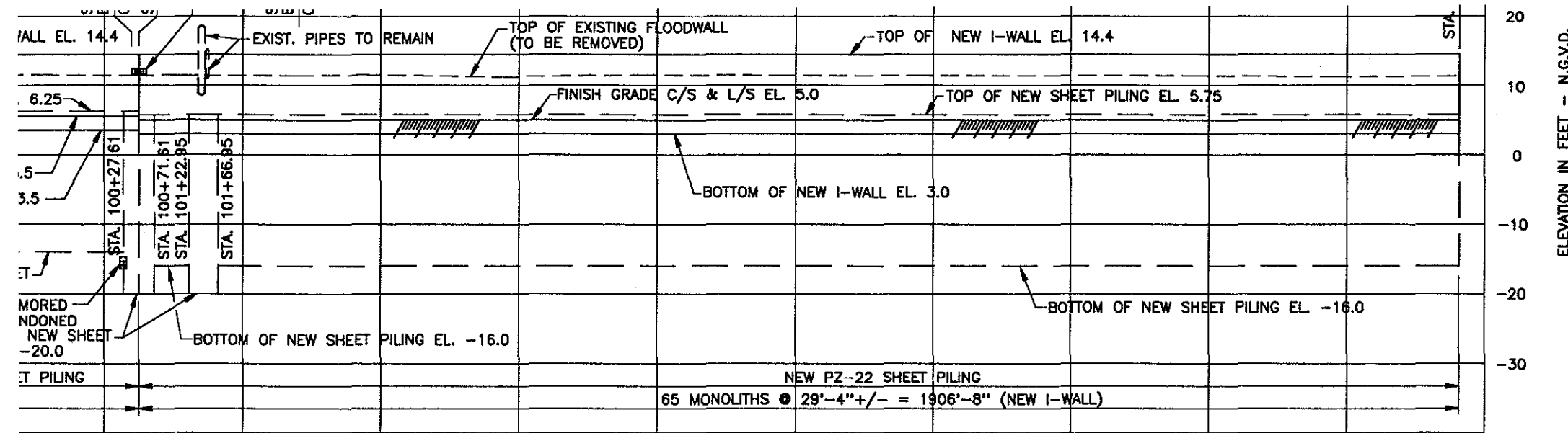
NOTES:
FOR TYPICAL SECTIONS, SEE DWGS. 15-17.
(▲) FOR LIMITS OF REMOVAL, SEE TYPICAL SECTIONS DWGS. 15-17.



SYMBOL	DESCRIPTION	DATE	APPROVED
REVISIONS			
U. S. ARMY ENGINEER DISTRICT, NEW ORLEANS CORPS OF ENGINEERS NEW ORLEANS, LOUISIANA			
BURK - KLEINPETER, INC. <small>ENGINEERS, ARCHITECTS, PLANNERS, ENVIRONMENTAL SCIENTISTS</small> NEW ORLEANS, LOUISIANA		GOTECH, INC. <small>CONSULTING ENGINEERS</small> BATON ROUGE, LOUISIANA	
LAKE PONCHARTRAIN, LA. AND VICINITY HIGH LEVEL PLAN LONDON AVE. OUTFALL CANAL, PARALLEL PROTECTION MIRABEAU AVE. TO ROBERT E. LEE BLVD., WEST BANK MIRABEAU AVE. TO LEON C. SIMON BLVD., EAST BANK ORLEANS PARISH, LOUISIANA			
PROFILE			
DESIGNED BY: S.I.S./B.D.	DATE: 11/93	PLOT SCALE: 1200	PLOT DATE: 11/17/93
DRAWN BY: B.V.L./M.W.B.	CADD FILE: 4029512.DWG	FILE NO. H-4-40295	
CHECKED BY: R.A.C./G.L.M.	SOLICITATION NO.		
SUBMITTED BY:	DWG. 12 OF		

BKI-08753

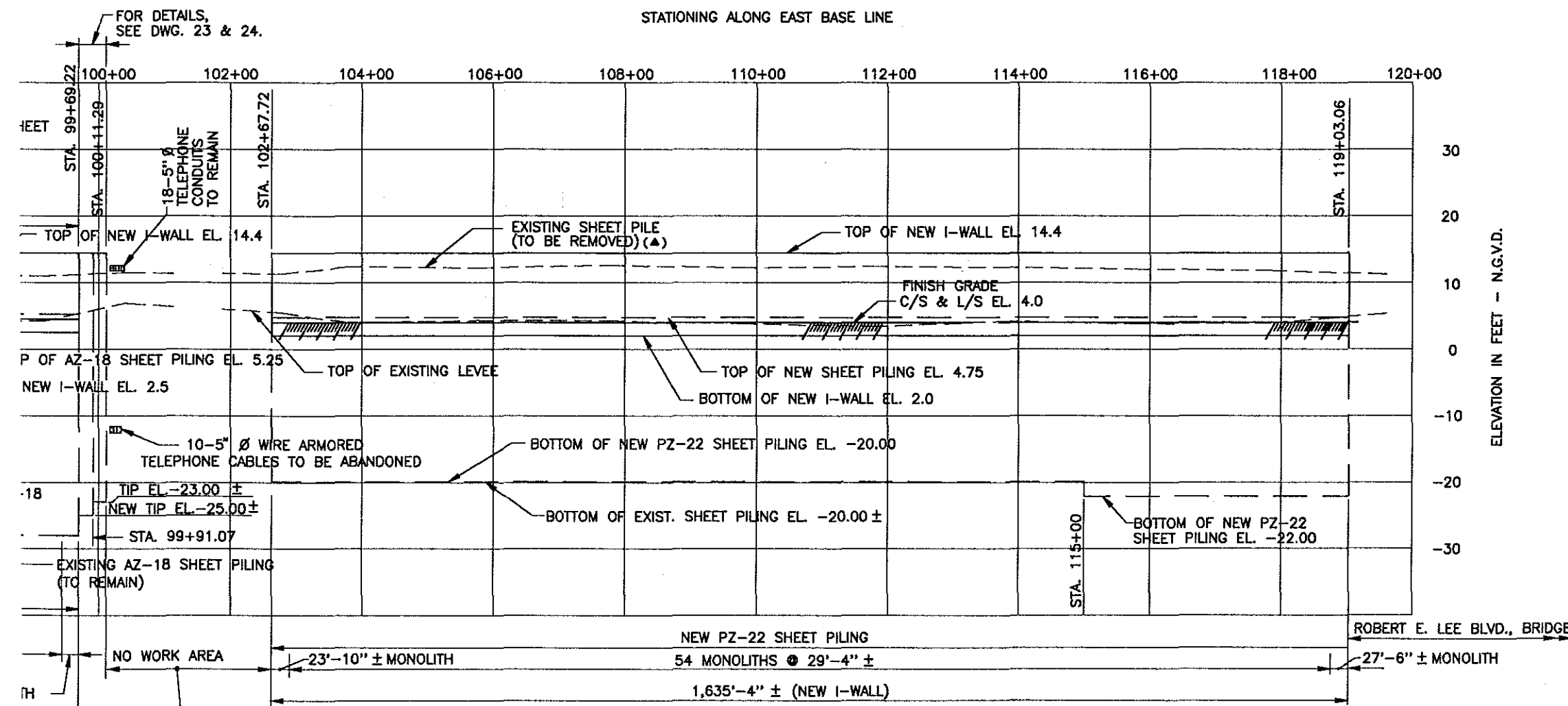




WEST PROFILE (CANAL SIDE ELEVATION)

SCALE: HOR. 1" = 100'
VERT. 1" = 10'

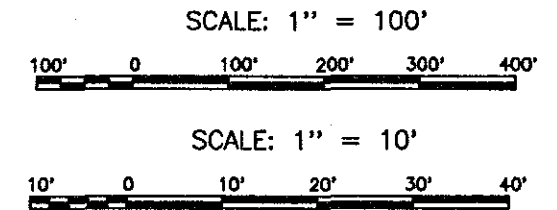
(▲) FOR LIMITS OF REMOVAL, SEE TYPICAL SECTIONS DWGS. 15-17.



EAST PROFILE (LAND SIDE ELEVATION)

SCALE: HOR. 1" = 100'
VERT. 1" = 10'

BKI-08754



SYMBOL	DESCRIPTION	DATE	APPROVED
REVISIONS			
U. S. ARMY ENGINEER DISTRICT, NEW ORLEANS CORPS OF ENGINEERS NEW ORLEANS, LOUISIANA			
BURK - KLEINPETER, INC. <small>ENGINEERS, ARCHITECTS, PLANNERS, ENVIRONMENTAL SCIENTISTS</small> NEW ORLEANS, LOUISIANA		GOTECH, INC. <small>CONSULTING ENGINEERS</small> BATON ROUGE, LOUISIANA	
LAKE PONCHARTRAIN, LA. AND VICINITY HIGH LEVEL PLAN LONDON AVE. OUTFALL CANAL, PARALLEL PROTECTION MIRABEAU AVE. TO ROBERT E. LEE BLVD., WEST BANK MIRABEAU AVE. TO LEON C. SIMON BLVD., EAST BANK ORLEANS PARISH, LOUISIANA			
PROFILE			
DESIGNED BY: S.I.S./B.D.	DATE: 11/93	PLOT SCALE: 1200	PLOT DATE: 11/17/93
DRAWN BY: B.V.L./M.W.B.	CADD FILE: 4029513.DGN	FILE NO. H-4-40295	
CHECKED BY: R.A.C./G.L.M.	SUBMITTED BY:	SOLICITATION NO.	DWG. 13 OF
DESIGN ENGINEER			