

DISTANCE IN MILES

LEGEND

<p>SILT</p> <p>CLAY</p> <p>SILT CLAY</p> <p>CLAYEY SILT</p> <p>SAND</p> <p>40% GRAVEL</p> <p>Maximum gravel size shown in inches on left, (CP denotes a range in size from 0.12 to 0.38 inches). Percentage of gravel shown on right.</p>	<p>ABBREVIATIONS</p> <p>Dec. Veg. Decayed Vegetation glauc. Glauconite In. b. Interbedded lam. Laminated len. Lenses Lig. Lignitic Sc. Scattered strks. Streaks</p> <p>bldrs. Boulders cl. Clay cl. b. Clayball cl. s. Claystone congl. Conglomerate grav. Gravel Ir. s. Ironstone sd. Sand sd. s. Sandstone sl. Silt sl. s. Siltstone</p> <p>PROJECT BORINGS</p> <p>TOP OF GRAVELIFEROUS SAND</p> <p>TOP OF COARSE SAND</p> <p>OTHER BORINGS - DETAIL OF LOG NOT AVAILABLE</p>
---	--

GEOLOGICAL INVESTIGATION
MISSISSIPPI RIVER ALLUVIAL VALLEY

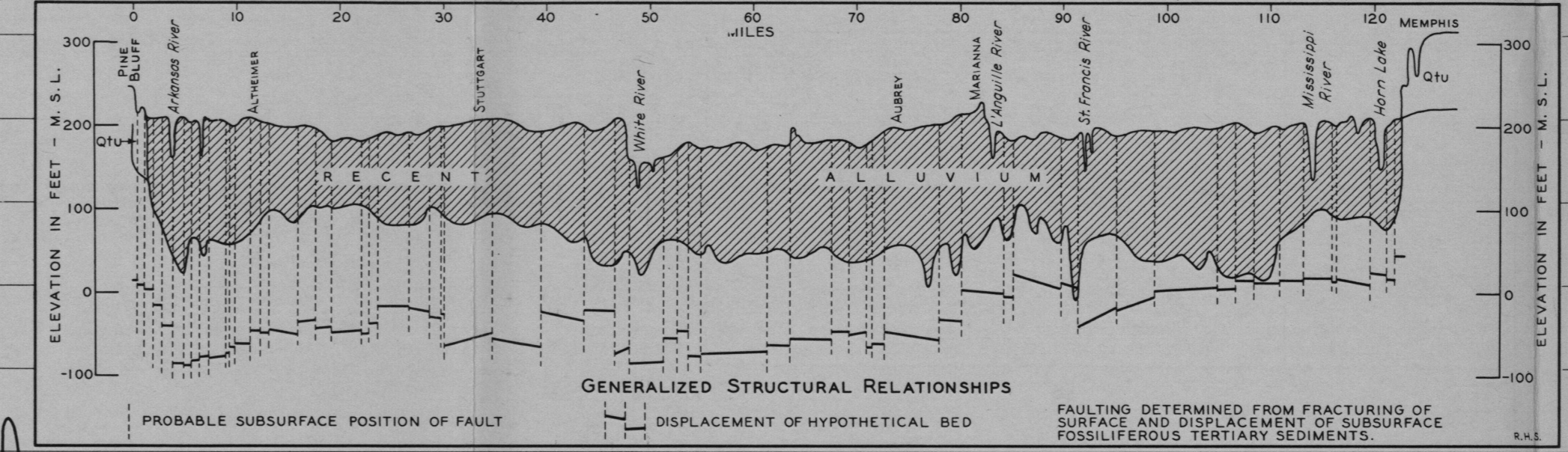
CROSS SECTION
PINE BLUFF, ARK. - MEMPHIS, TENN.

IN 3 SHEETS SCALES AS SHOWN SHEET 2

OFFICE OF THE PRESIDENT, MISSISSIPPI RIVER COMMISSION
VICKSBURG, MISSISSIPPI 1944

TO ACCOMPANY REPORT OF HAROLD N. FISK, P.H.D., CONSULTANT
DATED LOUISIANA STATE UNIVERSITY, BATON ROUGE, LA. 1 DEC. 1944

P.R.M.-W.O.D.-H.N.F. FILE NO. MRC/2588 SHEET 8a



JACKSON GROUP
(For description see Plate 6)

CLAIBORNE GROUP
(For description see Plate 6)

DISTANCE IN MILES

ELEVATION IN FEET - M. S. L.

ELEVATION IN FEET - M. S. L.

45

50

55

60

65

70

75

80

45

50

55

60

65

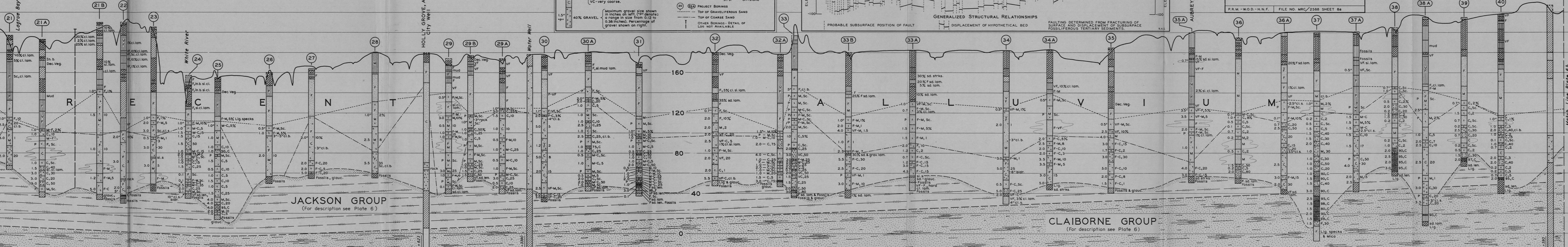
70

75

80

Match Line Plate 6

Match Line Plate 6b



HOLLY GROVE, ARK.
City Well

Water Well

AUBREY, ARK.

MARIANNA, ARK.
City Well

LD = 590

LD = 625

LD = 630

LD = 590