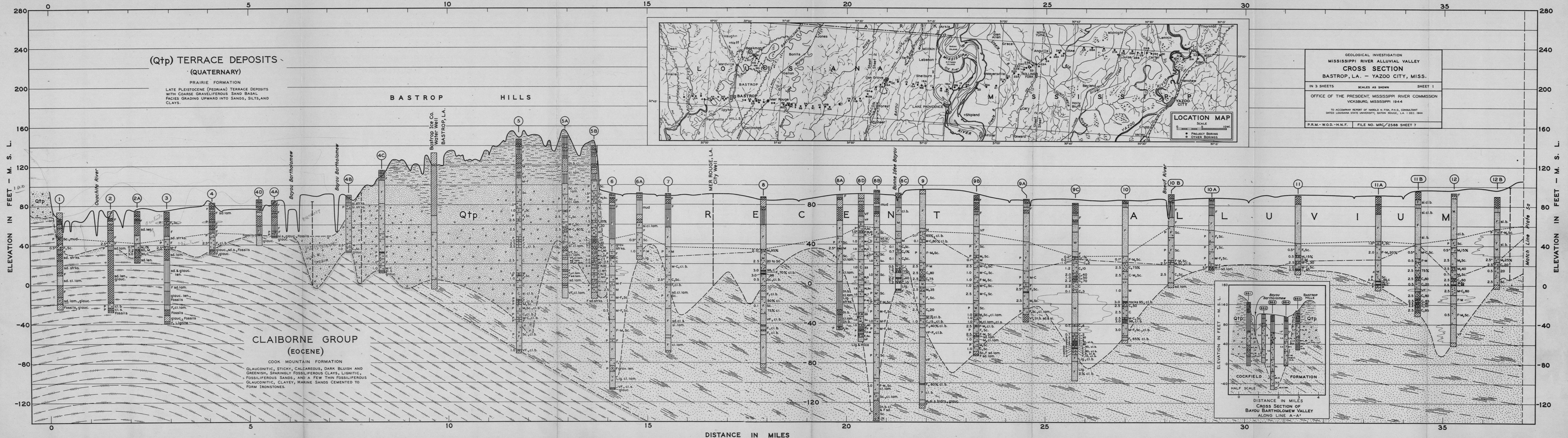


DISTANCE IN MILES



(QtP) TERRACE DEPOSITS - (QUATERNARY)
 PRAIRIE FORMATION
 LATE PLEISTOCENE (PEORIAN) TERRACE DEPOSITS WITH COARSE GRAVELIFEROUS SAND BASAL FACIES GRADING UPWARD INTO SANDS, SILTS, AND CLAYS.

BASTROP HILLS

RECENT ALLUVIUM

CLAIBORNE GROUP (EOCENE)

COOK MOUNTAIN FORMATION
 GLAUCONITIC, STICKY, CALCAREOUS, DARK BLuish AND GREENISH, SPARINGLY FOSSILIFEROUS CLAYS, LIGNITIC, FOSSILIFEROUS SANDS, AND A FEW THIN FOSSILIFEROUS GLAUCONITIC, CLAYEY, MARINE SANDS CEMENTED TO FORM IRONSTONES.

GEOLOGICAL INVESTIGATION
 MISSISSIPPI RIVER ALLUVIAL VALLEY
CROSS SECTION
 BASTROP, LA. - YAZOO CITY, MISS.
 IN 3 SHEETS SCALES AS SHOWN SHEET 1
 OFFICE OF THE PRESIDENT, MISSISSIPPI RIVER COMMISSION
 VICKSBURG, MISSISSIPPI 1944
 TO ACCOMPANY REPORT OF HAROLD R. FISK, PH.D. CONSULTANT
 DATED LOUISIANA STATE UNIVERSITY, BATON ROUGE, LA. 1 DEC. 1944
 P.R.M. - W.O.D. - H.N.F. FILE NO. MRC/2588 SHEET 7

