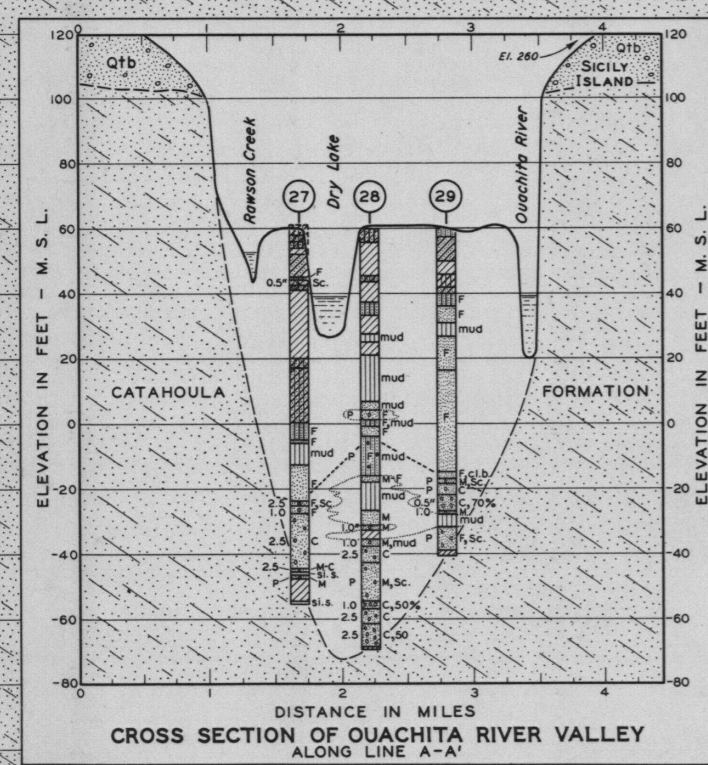


GEOLOGICAL INVESTIGATION
 MISSISSIPPI RIVER ALLUVIAL VALLEY
CROSS SECTION
HARRISONBURG, LA. - NATCHEZ, MISS.
 IN 1 SHEET SCALES AS SHOWN SHEET 1
 OFFICE OF THE PRESIDENT, MISSISSIPPI RIVER COMMISSION
 VICKSBURG, MISSISSIPPI 1944
 TO ACCOMPANY REPORT OF HAROLD N. FISK, P.H.D., CONSULTANT
 DATED LOUISIANA STATE UNIVERSITY, BATON ROUGE, LA. 1 DEC. 1944
 P.R.M.-W.O.D.-H.N.F. FILE NO. MRC/2598 SHEET 6

TERRACE DEPOSITS
 (QUATERNARY)
 Qtb - BENTLEY TERRACE FORMATION
 Qtm - MONTGOMERY TERRACE FORMATION
 PLEISTOCENE TERRACE DEPOSITS WITH COARSE GRAVELIFEROUS SAND BASAL FACIES GRADING UPWARD INTO SANDS, SILTS, AND CLAYS.



GRAND GULF GROUP	
MIOCENE	
FLEMING FORMATION MASSIVE SILTS AND CLAYS WITH INTERCALATED SANDS; SPARINGLY FOSSILIFEROUS, CALCAREOUS CLAYS; AND THIN TUFFACEOUS BEDS. (EQUIVALENT BEDS IN MISSISSIPPI ARE INCLUDED IN THE HATTIESBURG FORMATION).	CATAHOULA FORMATION SANDS, SILTS, AND LEAF BEARING SILTY CLAYS WITH MASSIVE LENTICULAR SANDS AND LOCAL TUFFACEOUS SILTSTONE BEDS. (LOWER GRAND GULF)

