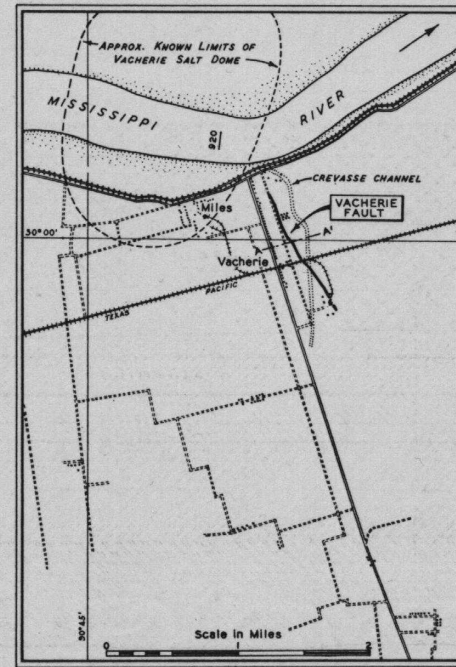
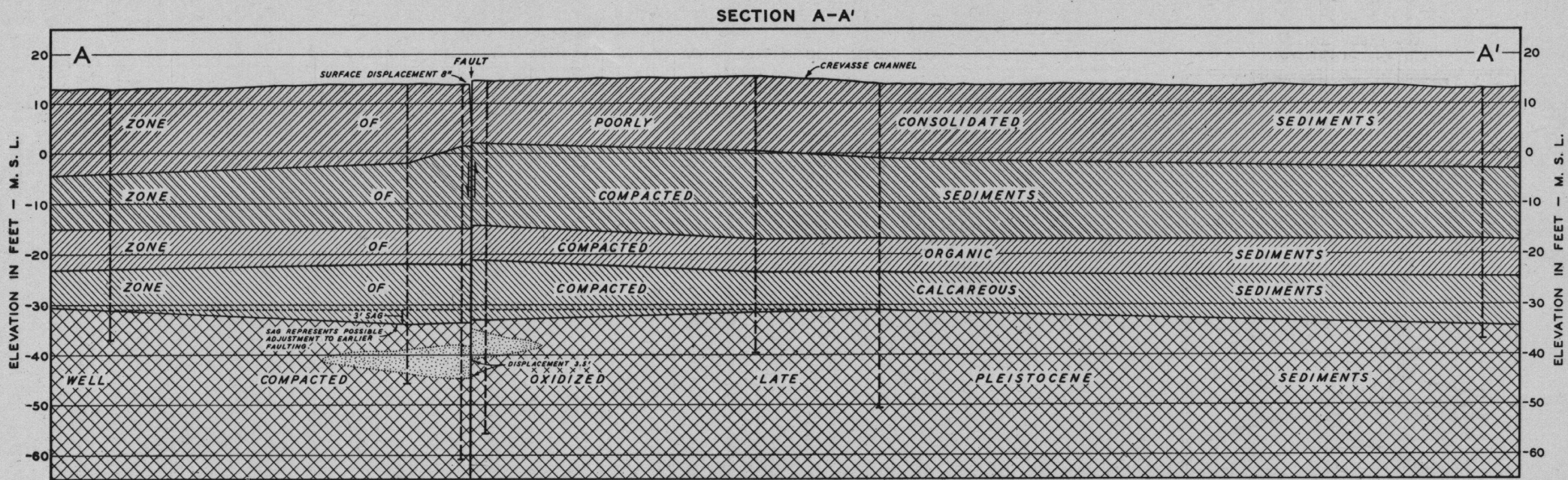


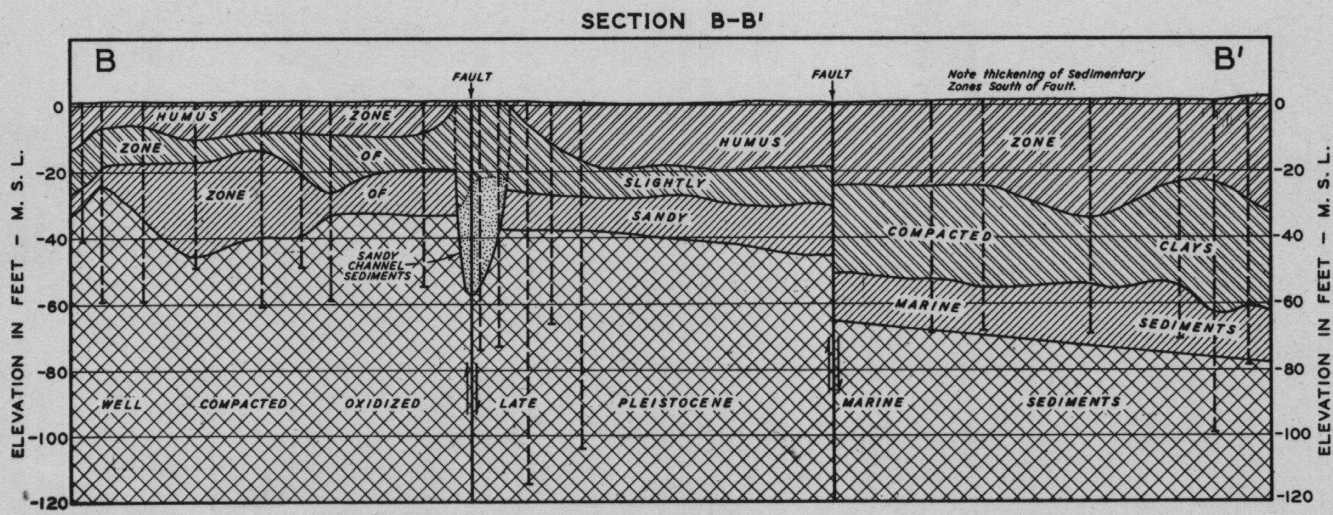
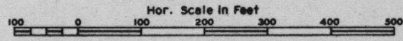
MAJOR FEATURES OF THE DELTAIC PLAIN AND THEIR RELATION TO THE REGIONAL FAULT ZONES



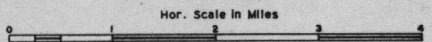
VACHERIE FAULT
ACTIVE APRIL 1943



DISPLACEMENT OF ZONES OF SEDIMENT BY THE VACHERIE FAULT



DISPLACEMENT OF ZONES OF SEDIMENT BY FAULTS OF THE LAKE BORGNE FAULT ZONE



MAJOR FAULTS
AND
STRUCTURAL DEPRESSIONS
IN THE
DELTAIC PLAIN