

GEOLOGICAL INVESTIGATION
MISSISSIPPI RIVER ALLUVIAL VALLEY
PHYSIOGRAPHIC MAP
CENTRAL GULF COASTAL PLAIN

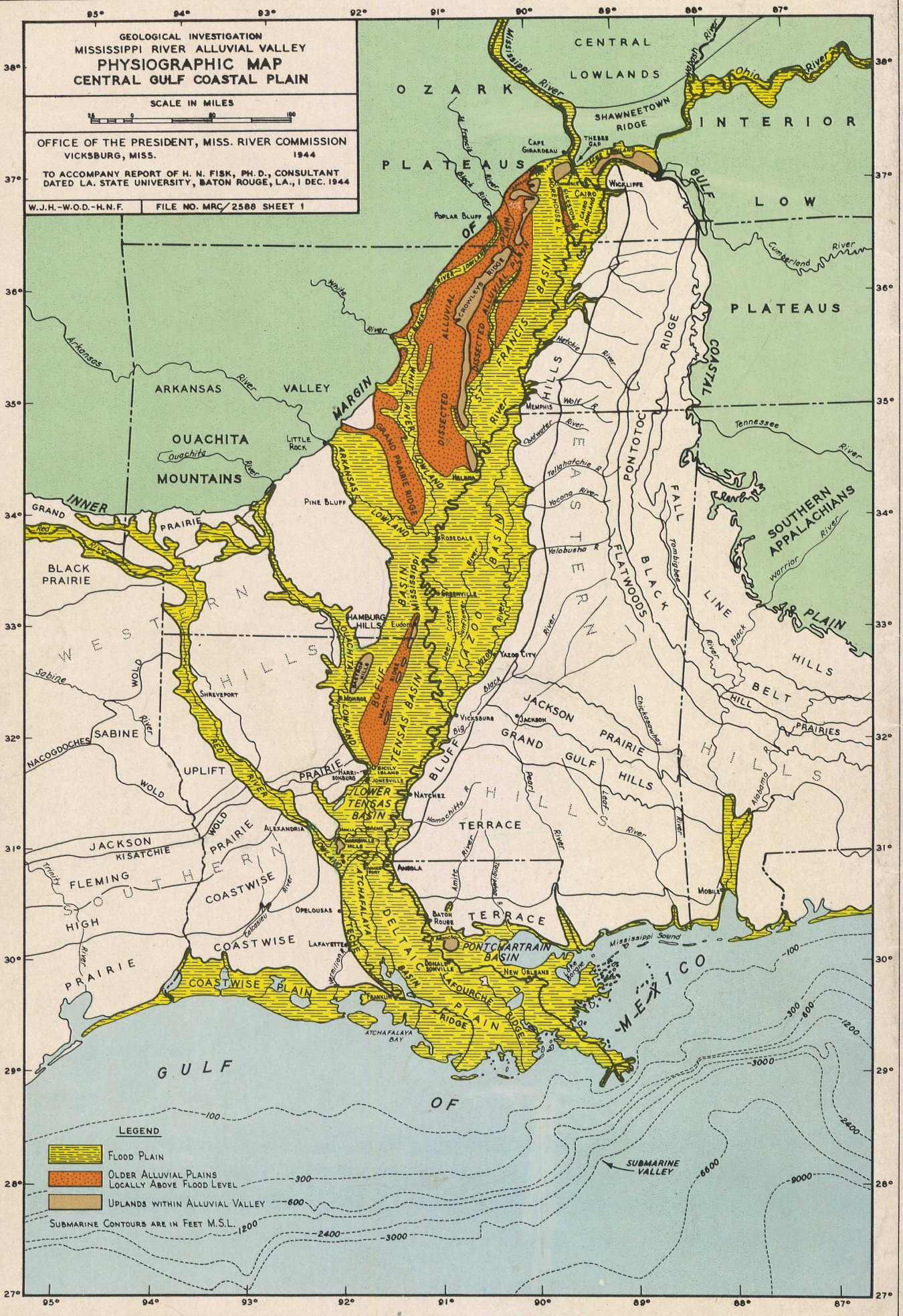
SCALE IN MILES






OFFICE OF THE PRESIDENT, MISS. RIVER COMMISSION
VICKSBURG, MISS. 1944

TO ACCOMPANY REPORT OF H. N. FISK, PH. D., CONSULTANT
DATED LA. STATE UNIVERSITY, BATON ROUGE, LA., 1 DEC. 1944

W.J.H.-W.O.D.-H.N.F. FILE NO. MRC/2588 SHEET 1



LEGEND

-  FLOOD PLAIN
 -  OLDER ALLUVIAL PLAINS
LOCALLY ABOVE FLOOD LEVEL
 -  UPLANDS WITHIN ALLUVIAL VALLEY
- SUBMARINE CONTOURS ARE IN FEET M.S.L.