

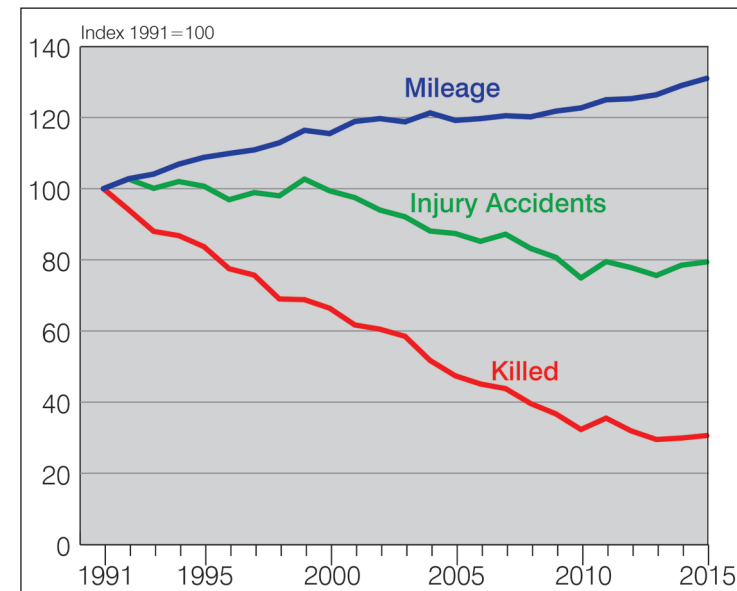
Traffic Accidents

	1970	1980	1990	1991	2000	2005	2010	2014	2015
Total accidents	1.392.007	1.684.604	2.010.575	2.311.466	2.350.227	2.253.992	2.411.271	2.406.685	2.516.831
Injury accidents	377.610	379.235	340.043	385.147	382.949	336.619	288.297	302.435	305.659
of which in urban areas	254.198	261.302	218.177	245.617	245.470	225.875	195.833	209.618	209.821
rural areas without autobahns	107.762	101.701	97.559	112.182	111.901	89.801	73.635	73.916	75.725
of which in national roads	47.810	35.825	34.109	40.728	38.754	30.001	24.245	23.903	24.786
autobahns	15.650	16.232	24.307	27.348	25.578	20.943	18.829	18.901	20.113
Injured accident rates [accidents/million veh.·km]									
total	1,50	1,03	0,70	-	0,58	0,49	0,41	0,41	0,40
autobahns	0,45	0,20	0,18	-	0,13	0,10	0,09	0,08	0,08
national roads rural areas	0,93	0,57	0,42	-	0,36	0,28	0,22	0,22	0,22
Total killed	19.193	13.041	7.906	11.300	7.503	5.361	3.648	3.377	3.459
of which in urban areas	8.494	5.124	2.205	3.349	1.829	1.471	1.011	983	1.048
rural areas without autobahns	9.754	7.113	4.765	6.399	4.767	3.228	2.207	2.019	1.997
of which in national roads	4.785	2.850	1.942	2.713	1.908	1.238	829	723	771
autobahns	945	804	936	1.552	907	662	430	375	414
pedestrians	6.056	3.095	1.459	1.918	993	686	476	523	537
drivers/riders and passengers of motorcycles	1.553	1.997	939	1.235	1.102	982	709	674	701
passenger cars	8.989	6.440	4.558	6.801	4.396	2.833	1.840	1.575	1.620
bicycles	1.835	1.142	711	925	659	575	381	396	383
persons under the age of 15 years	2.167	1.018	355	511	240	159	104	71	84
from 18 to 24 years	3.403	3.221	1.976	2.749	1.736	1.076	690	496	473
persons aged 65 years and over	4.016	2.733	1.574	1.853	1.311	1.162	910	987	1.024
Fatality rate [fatalities/billion veh.·km]									
total	76,5	35,4	16,2	-	11,3	7,8	5,2	4,6	4,6
autobahns	27,0	10,0	6,9	-	4,5	3,1	2,0	1,6	1,7
national roads and rural areas	92,7	45,6	24,2	-	17,6	11,5	7,7	6,5	6,9
Total injured	531.795	500.463	448.158	505.535	504.074	433.443	371.170	389.535	393.432
of which in urban areas	331.176	323.656	265.643	298.712	300.798	274.010	238.131	253.471	253.560
rural areas without autobahns	173.483	151.704	143.388	163.520	163.078	127.066	104.166	105.294	107.498
of which in national roads	80.183	55.570	53.172	62.526	59.939	45.180	36.735	36.839	38.026
autobahns	27.136	25.103	39.127	43.303	40.198	32.367	28.873	30.770	32.374
pedestrians	77.449	56.451	39.169	46.307	38.115	33.916	29.663	30.638	31.073
drivers/riders and passenger of motorcycles	46.983	96.370	44.821	55.080	59.383	52.585	43.507	46.208	45.345
passenger cars	342.277	279.649	283.344	313.589	309.496	247.281	211.556	215.387	219.663
bicycles	40.531	50.436	64.145	70.005	72.738	77.859	65.192	77.900	77.793
persons under the age of 15 years	70.332	58.914	43.049	50.773	45.141	36.795	28.525	28.603	28.151
from 18 to 24 years	131.477	142.718	123.321	132.015	111.210	86.521	72.482	66.745	65.683
persons aged 65 years and over	27.842	30.795	28.905	32.011	36.327	40.781	39.592	46.624	47.666

**Traffic and Accident Data
Summary Statistics – Germany**


Bundesanstalt für Straßenwesen (BASt)
Federal Highway Research Institute

Bergisch Gladbach, September 2016



Motor Vehicle Population (since 2007 including temporarily deregistered vehicles, since 2008 without decommissioned vehicles) ¹⁾

	1970	1980	1990	2000	2005	2010	2014	2015
Total (including miscellaneous)	16.783.227	29.226.359	36.702.727	53.107.377	56.305.273	52.288.623	55.010.923	55.751.993
mofas, mopeds ²⁾	-	2.110.208	954.449	1.742.704	1.785.620	2.104.204	2.044.104	2.036.352
motorcycles ³⁾	228.604	571.930	1.233.100	3.337.848	3.827.899	3.762.561	4.054.946	4.145.392
passenger cars	13.941.079	23.191.616	30.684.811	42.839.906	45.375.526	41.737.627	43.851.230	44.403.124
buses	47.253	70.458	70.370	85.574	85.508	76.433	76.794	77.501
trucks	1.028.116	1.277.167	1.388.505	2.526.896	2.572.142	2.385.099	2.629.209	2.701.343
tractor-trailers	34.638	60.293	78.166	162.409	185.364	184.589	170.911	188.481

Highway Network for Interstate Traffic (in Kilometer, as of 01 January in each case, in urban areas und rural areas)

	1970	1980	1990	2000	2005	2010	2014	2015
Total	162.344	171.521	173.861	230.735	231.467	230.969	230.376	230.147
autobahns	4.110	7.292	8.822	11.515	12.174	12.813	12.917	12.949
national roads	32.205	32.248	31.063	41.321	40.969	39.887	39.386	38.917
state roads	65.358	65.543	63.299	86.823	86.736	86.615	86.211	86.331
district roads	60.671	66.438	70.677	91.076	91.588	91.654	91.862	91.950

Mileage (in billion Kilometer)

	1970	1980	1990	2000	2005	2010	2014	2015
Total (including miscellaneous) ⁴⁾	251,0	367,9	488,3	663,0	684,3	704,8	740,5	752,3
by type of motor vehicle ⁴⁾								
mofas, mopeds	4,6	7,6	2,7	3,8	4,3	4,7	4,7	4,6
motorcycles	1,9	3,3	5,9	13,0	13,0	11,6	12,6	12,9
passenger cars	212,9	314,3	431,5	559,5	578,2	599,0	627,2	635,8
buses	2,0	3,0	3,1	3,7	3,5	3,3	3,3	3,4
trucks	26,4	33,1	33,1	58,9	57,0	60,7	66,3	68,6
tractor-trailers	2,0	4,0	5,8	12,7	15,5	16,9	16,9	17,2
on federal highways ⁵⁾								
autobahns	35,0	80,6	135,6	203,4	213,3	216,8	230,6	237,3 ⁶⁾
national roads rural areas	51,6	62,5	80,3	108,2	107,9	107,9	110,5	111,2 ⁶⁾

Reference:

Federal Statistical Office, Federal Motor Transport Authority, Federal Ministry of Transport and Digital Infrastructure, German Institute for Economic Research, Federal Highway Research Institute.

All data until 1990 (incl.) old federal states.

Footnotes:

- 1) until 2000 as of 01 July in each case; from 2005 onwards: as of 01 January in each case; since 01.01.2006: passenger cars including mobile homes, ambulances, emergency doctor's cars
- 2) including light three- and four-wheeled vehicles
- 3) until 1990 without light and small motorcycles (LMC, SMC); from 1995 onwards including LMC, SMC; from 2004 onwards including three- and light four-wheeled vehicles
- 4) resident concept (including distances covered by German vehicles abroad), DIW
- 5) domestic concept, BAST
- 6) provisional data



Bundesanstalt für Straßenwesen
Federal Highway Research Institute
Brüderstrasse 53
D - 51427 Bergisch Gladbach
Phone +49 2204 43-0
Fax +49 2204 43-673
E-Mail info@bast.de
www.bast.de