

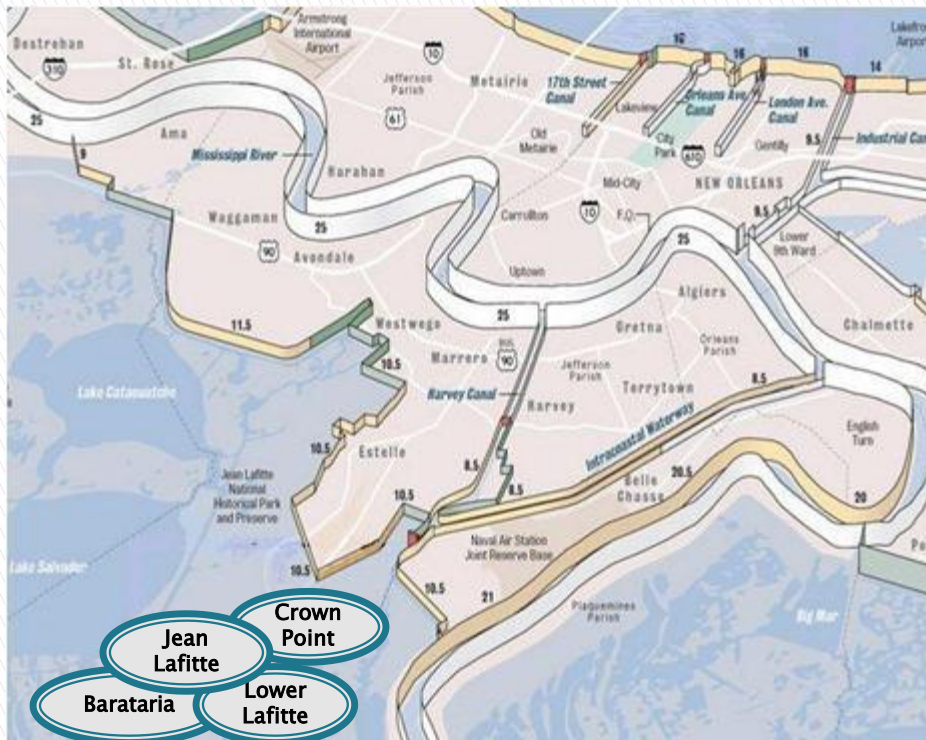


THE TOWN OF  
JEAN LAFITTE  
*A world apart.*

# Coastal Protection and Restoration in Jean Lafitte

Mayor Timothy P. Kerner,  
Town of Jean Lafitte

Governor's Advisory Commission on  
Coastal Protection, Restoration, and Conservation  
*Wednesday, October 2, 10:00 a.m.*  
Leo E. Kerner, Jr. Multipurpose Complex Community Center  
4917 City Park Drive, Lafitte, LA 70067



The Lafitte Area includes the Town of Jean Lafitte and the surrounding communities of Lafitte, Barataria, and Crown Point.

The Lafitte Area is on the unprotected side of the West Bank and Vicinity Hurricane Damage Risk Reduction System (WBV-HDRRS), and has no hurricane storm surge protection and limited protection from tidal flooding.



## “ WHO WE ARE ”

- The communities along Bayou Barataria are small towns with a unique cultural history.
- We help produce 25% of the country’s seafood.
- We contribute to the State of Louisiana’s tourism industry by providing a “hands-on” experience, minutes outside of New Orleans.
- We support the exploration, production, and transportation of 1/3 of the nation’s oil and gas.

The communities along the banks of Bayou Barataria are culturally unique in that they provide support for the only remaining economically sustainable seafood industries in Jefferson Parish. Our hard-working residents are proud of their unique bayou culture that has endured for centuries

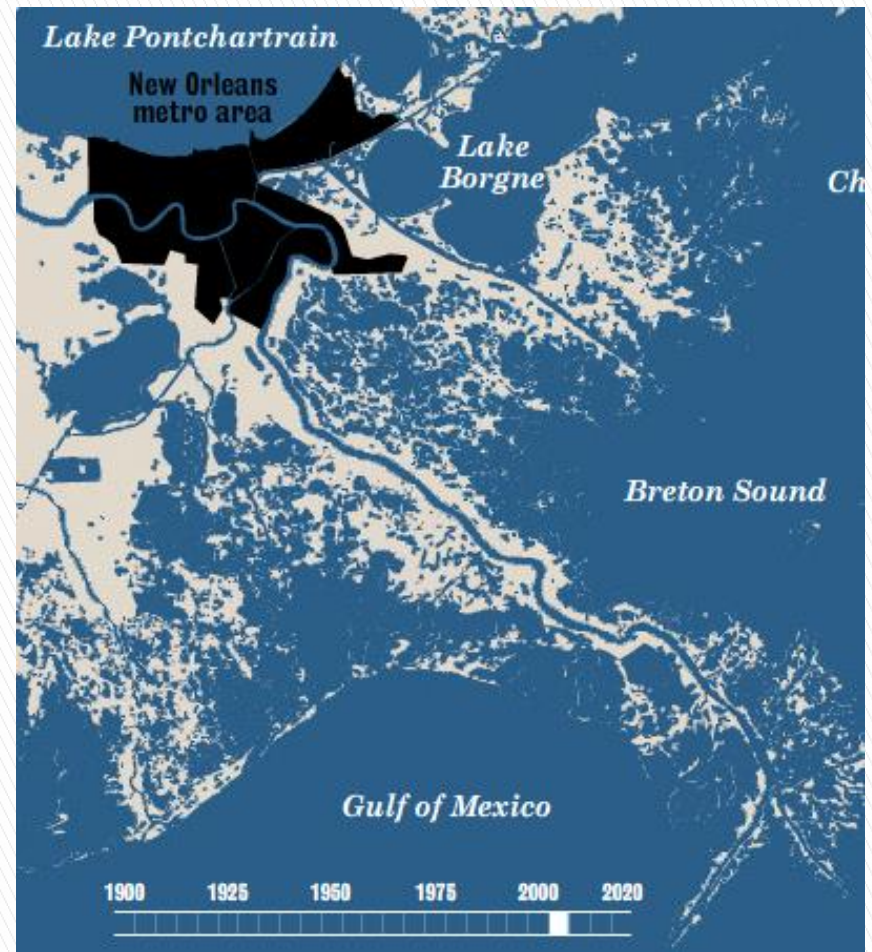
These communities boost the local tourism markets by providing a “hands on” experience of the heritage found in this historical way of life. They also support recreational boating and fishing interests with commercial charter boat services and public docking facilities.

Finally, these communities include marine transportation and related service companies that cater directly to the daily needs of local oil and gas production and exploration.

# Changes Over Time: Land Loss in the Barataria Basin



1930: Once there was over 50 miles of marsh, ridges and barrier island between the Lafitte Area and the Gulf of Mexico.



2005: Today, there are only skeletal remains of a once viable natural protection system.

# Coastal Restoration

- ▶ A number of projects to restore coastal areas in the vicinity of Lafitte have been built, and other important restoration efforts are underway, which include:
  - BA-43 (EB): Long Distance Mississippi River Sediment Pipeline
  - BA-48: Bayou Dupont Ridge Creation and Marsh Restoration
  - BA-52: Lower Lafitte Shoreline Stabilization at Bayou Rigolettes
  - BA-164: Bayou Dupont Sediment Delivery – Marsh Creation 3 (BA-164)
  - BA-153: Mid-Barataria Diversion



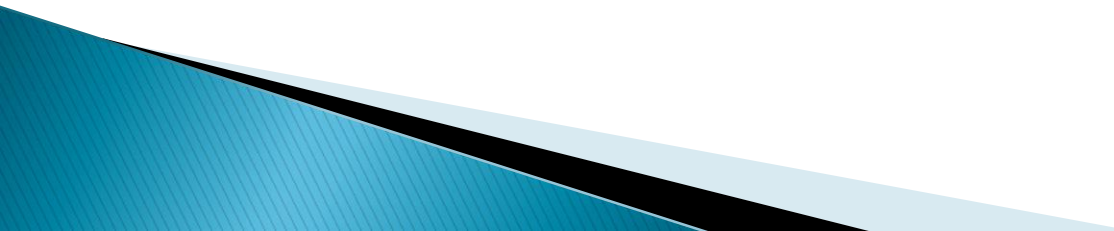
- ▶ As important as these project are, coastal restoration alone cannot protect the Lafitte Area from flooding.



*Times Picayune Staff Photo by Susan Poag*

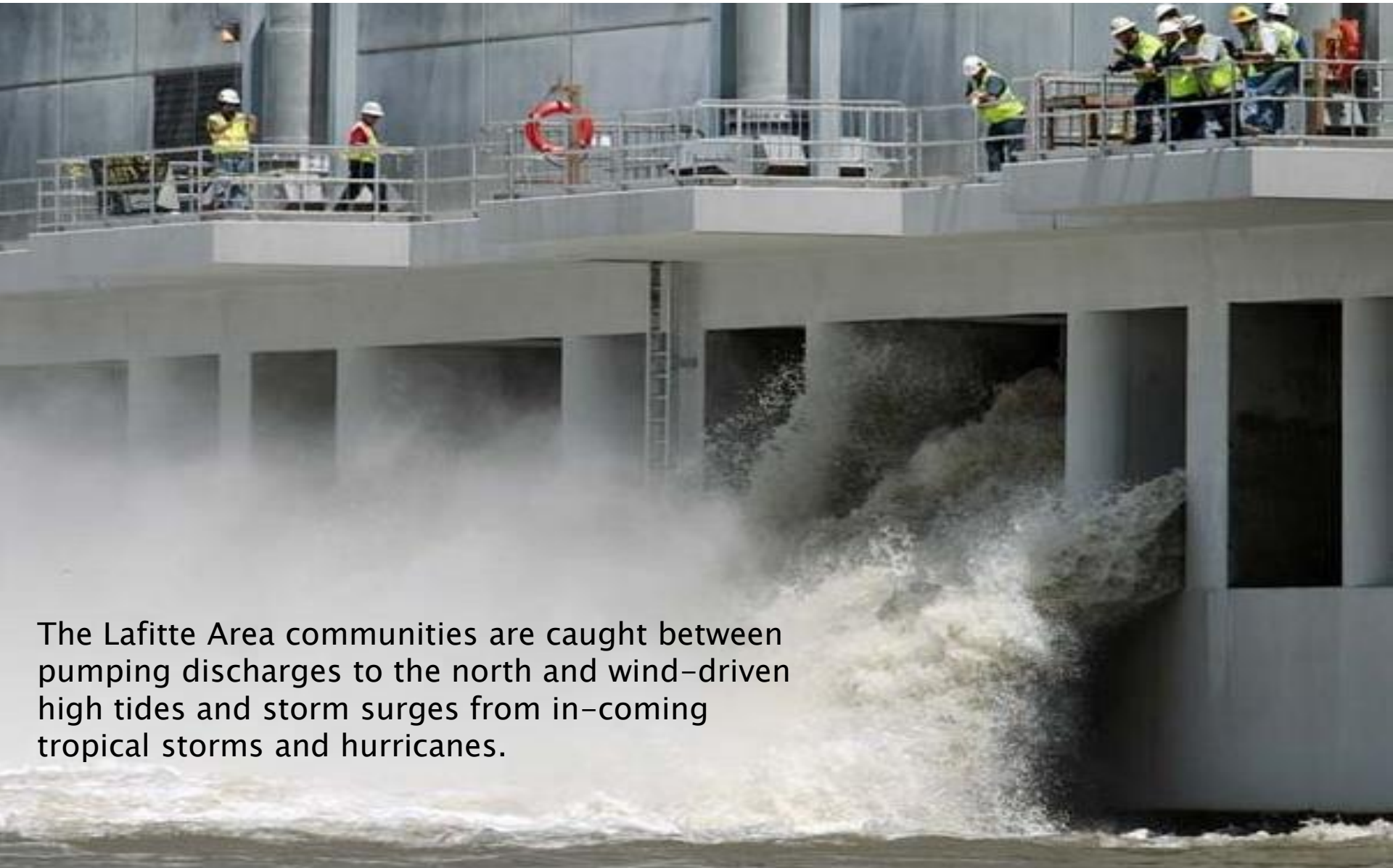
- ▶ The Lafitte Area has been flooded by storm surge many times in the past decade.
  - 2005: Hurricanes Katrina and Rita
  - 2008: Hurricanes Gustave and Ike
  - 2011: Tropical Storm Lee
  - 2012: Tropical Storm Debbie and Hurricane Isaac

# Coastal Concerns

- ▶ The people of the Lafitte Area are resilient, and have recovered from natural disasters many times during their history.
  - ▶ They are still recovering from the impacts of the Deepwater Horizon oil spill.
  - ▶ Residents are weary and increasingly worried that besides storm surge, man-made structures, one built and one planned, will further impact their community.
- 

# GIWW–West Closure Complex

*The World's Largest Pump Station*



The Lafitte Area communities are caught between pumping discharges to the north and wind-driven high tides and storm surges from in-coming tropical storms and hurricanes.



# Mid-Barataria Sediment Diversion

- ▶ This Master Plan project would move a mixture of as much as 250,000 cubic feet per second of sediment and water from the Mississippi River into the Barataria Basin at Myrtle Grove.
- ▶ Estimated Start Date: Fall 2015
- ▶ Estimated Cost: \$275 million



NOLA.com | The Times-Picayune

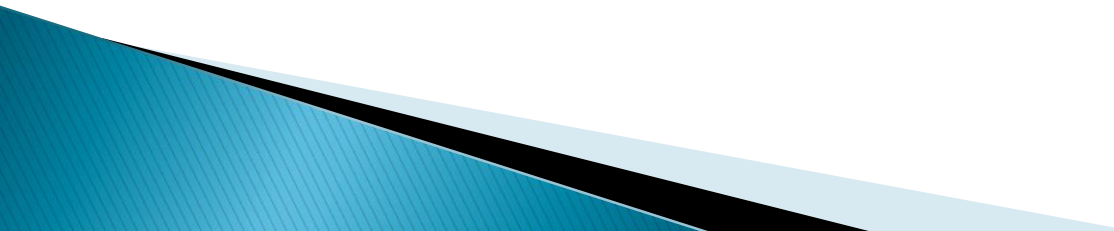
There is concern that the additional water input could add to flooding in the Lafitte Area, which is within the diversion influence area.

# Coastal Concerns

- ▶ While new flood maps could mean lower rates for thousands of West Bank residents, the people of the Lafitte Area are bracing for disaster. Those maps could make flood insurance cost prohibitive for hundreds of people outside levee protection systems.
- ▶ When even small storms cause catastrophic flooding, it will be harder for the communities to survive, particularly if insurance costs continue to rise.



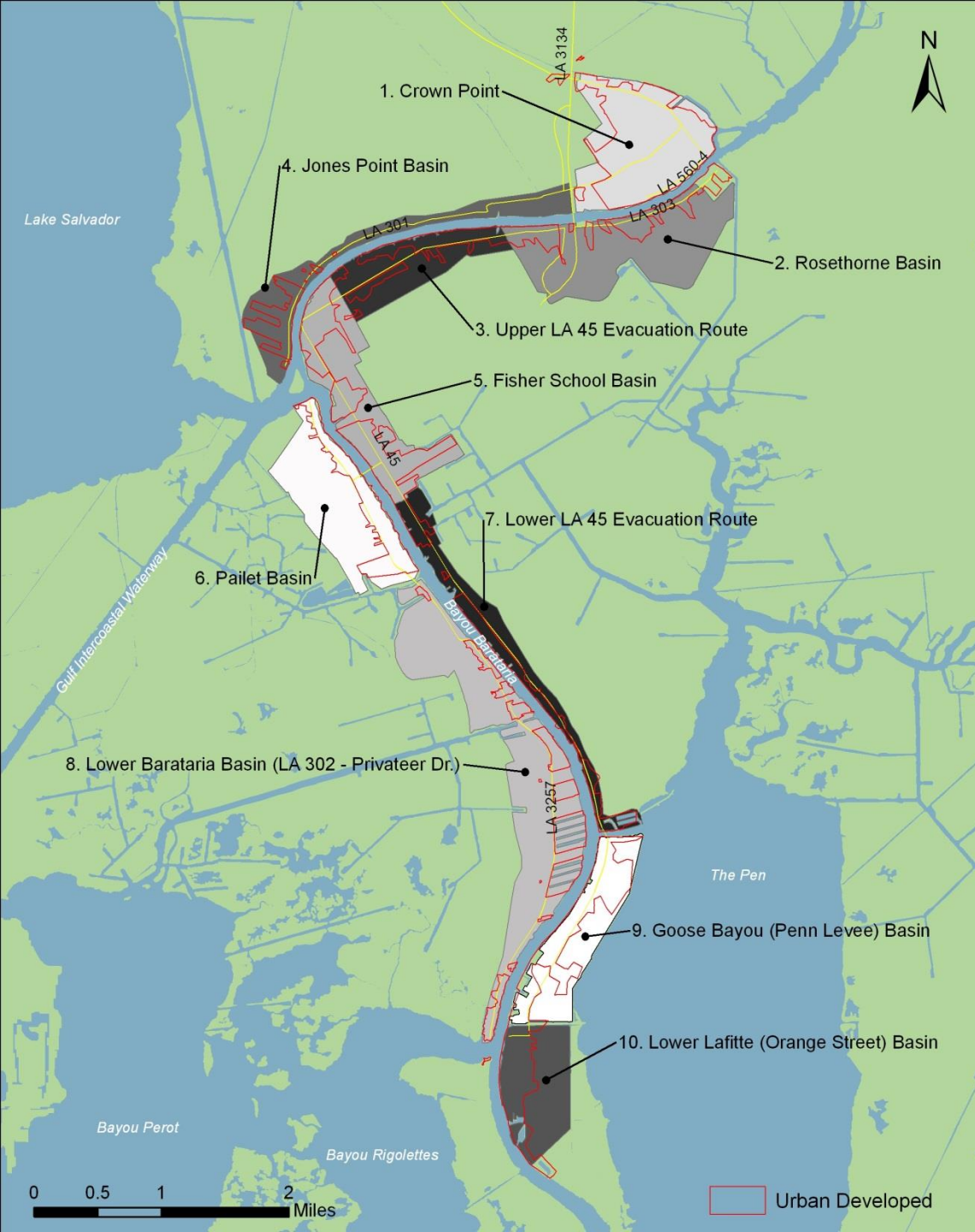
# Coastal Protection

- ▶ The Lafitte Area Independent Levee District has a double approach to reduce flooding risk:
    - Short-term: Secure tidal flood protection for its ten drainage basins.
    - Long-term: Secure 100-year flood protection ring levee system for all developed areas within the levee district.
- 

# Lafitte Area Drainage Basins

The Lafitte Area consists of ten (10) drainage basins.

- ▶ Fisher School Basin
- ▶ Rosethorne Basin
- ▶ Goose Bayou / The Pen Levee Basin
- ▶ Paillet Basin
- ▶ Upper LA 45 Evacuation Route
- ▶ Lower Lafitte (Orange Street) Basin
- ▶ Lower LA 45 Evacuation Route
- ▶ Lower Barataria (Privateer Drive) Basin
- ▶ Jones Point Basin
- ▶ Crown Point Basin



# Ongoing Protection Projects

- ▶ **Jean Lafitte Tidal Protection/Fisher School Basin (BA-75-1)**
  - Plans are complete
  - Right-of-way agreements have been acquired from approximately 90% of landowners
- ▶ **Jean Lafitte Tidal Protection/Rosethorne Basin (BA-75-2)**
  - Plans are 95% complete
- ▶ **Lafitte Area Levee Repair (BA-82)**
  - Erosion protection for the existing bank line at various locations along Bayou Barataria
  - Plans are complete
  - TJL is in the process of acquiring right of entry agreements with landowners

# LAFITTE AREA 100-YEAR FLOOD PROTECTION RING LEVEE SYSTEM

- ▶ Lafitte Ring Levee: Construction of a ring levee to an elevation of 10.0 feet around Lafitte for hurricane storm surge risk reduction, which could eventually be raised to 16.0 feet to reach the 100-year level of protection.
- ▶ The ring levee would increase the height of the back tidal protection levees, and combine those with navigational flood gates to reduce risk from storm surge during tropical storms.
- ▶ Project features include approximately 156,000 feet of earthen levee, two 30-foot barge gates, three 40-foot roller gates, one 56-foot roller gate, three 150-foot roller gates, and nine pumps with a combined capacity of 4,800 cfs.
- ▶ Estimated Cost: \$300M

Lake Salvador



GMW Structure  
15' W x 14' D x 16' H



GMW Structure  
15' W x 14' D x 16' H

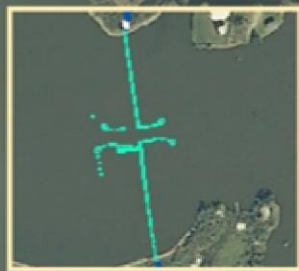
# LAFITTE AREA 100-YEAR FLOOD PROTECTION RING LEVEE SYSTEM



Pillar Structure  
30' W x 8' D x 16' H



Goose Bayou Structure  
30' W x 8' D x 16' H



Rigole Structure  
30' W x 10' D x 16' H



Barriere Structure  
15' W x 14' D x 16' H

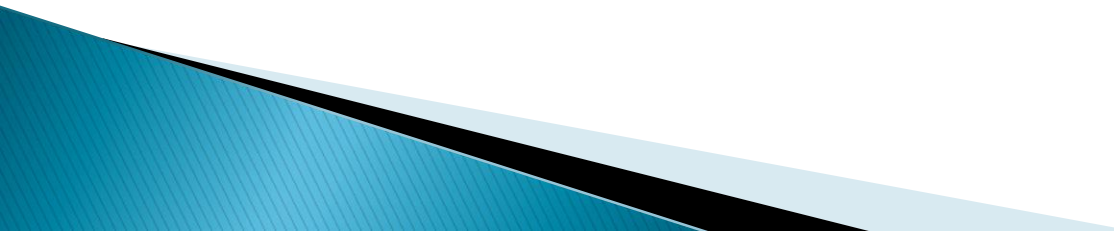


**Legend**

- 100YR Ring Levee
- Roadway Gate
- Sluice Gate
- Flood Gate

Bayou Rigoles

# Conclusion

- ▶ The Lafitte Area is pleased that so many coastal restoration projects have been implemented and that more are planned to restore the Barataria Landbridge and the Barataria Basin as a whole.
  - ▶ Coastal restoration projects alone cannot protect the Lafitte Area from flooding.
  - ▶ We understand that the fight to save south Louisiana cannot be won without sediment from the Mississippi River.
  - ▶ Before we can fully support large scale diversions that deliver sediment through reintroduction of river water, we must have assurance that the community's concerns regarding flood protection and the future of the seafood industry are addressed.
- 



# QUESTIONS?

